

C
10.5"
267



Hannay Reels®
The reel leader.

Firefighting & Rescue Reels

| Booster Hose | Large Diameter Hose | Hazmat Situations | Dual Hose | Collapsible Hose |
| Breathing & Utility Air | Live Cable | Extrications | Hydraulics & Rescue Tools |



Family owned and operated since 1933

Contents

How to Specify Hannay Reels

FIREFIGHTING REELS START ON PAGE 3

Reel Type	I.D. Hose Sizes	Page
How to Specify Hannay Reels		3
Manual or Power Rewind Hose Reels		
Series F4000	3/4" or 1"	4
Series F4100	3/4" or 1"	5
Series F/SBF	3/4" or 1"	6-7
Series ESF/SBESF	3/4" or 1"	8-9
Series FF/SBFF - Booster Hose	1-1/4" or 1-1/2"	10-11
Collapsible Hose	1-1/2" or 1-3/4"	
Manual Rewind Hose Reels		
Series F3100/FF3600 - Booster Hose	3/4" - 1-1/2"	12-13
Collapsible Hose	1" - 1-3/4"	
Manual or Power Rewind Dual Hose Reels		
Series F7100 - Dual Hose	3/4" - 1-1/2"	14
Mercedes and Niedner Altra® Capacities		15
Manual or Power Rewind Large Diameter Hose Reels		
Series HDLD Reels and Spools	1-1/2" - 6"	16-17



Top performance. Extreme conditions.

Safety and quick response time are critical when it comes to fighting fires. Our reels make payout and pickup quicker so you can work more efficiently and effectively when every second counts. That's why Hannay Reels is the #1 reel company specified by OEMs and professionals worldwide, based on product reliability, ease of use, and long life. When it comes to keeping your crew and your community safe, you can trust Hannay Reels.

Types of Firefighting reels:

Booster Hose Reels – Quick first-attack for small fires or while larger volume hoses are being set up.

LD (Large Diameter) Reels – Reels for long lengths of 1-1/2" to 6" collapsible hose.

Dual Agent Reels – For firefighting with foam.

Swing-Out Reels – For aircraft rescue firefighting applications.

Portable/Hand-held Reels – For hose or cable applications.

Mounting Hole Sizes for Firefighting Reels	
Pressed Frame Reels and Channel Framed Reels	7/16" wide x 7/8" long slot running left to right
Series 4000 Reels	13/32" round holes
Series LD Reels	5/8" round holes

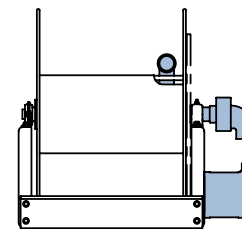
Attention Truck Committees and Specifiers of Fire & Rescue Apparatus

Products shown and described in this catalog are suggested models for broad use applications throughout the firefighting industry. All models can be assembled to dimensionally fit your unique applications and space requirements, and all our components are designed for multiple configurations.

For special orders, contact your Hannay dealer or call our Inside Sales Group.

Optional Location of Components

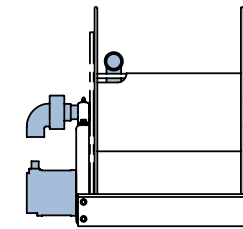
Location of the inlet, outlet riser, and rewind mechanism can be varied to meet your requirements and **must be specified on your order**. The drawings below show the component locations. Unless otherwise specified, most reels will be shipped as **Right Top Rewind** with the inlet, outlet riser, and rewind mechanism on the operator's right.



RT – Right Top Rewind

Reels have the inlet, outlet riser, and rewind mechanism on the operator's right. Hose unwinds from the top of the reel.

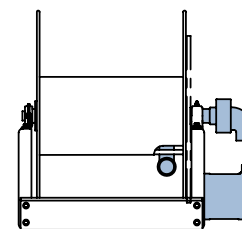
Standard – Always look at your reel from this position to determine right-hand or left-hand.



LT – Left Top Rewind

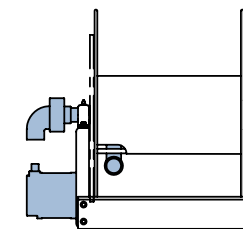
Reels have the inlet, outlet riser, and rewind mechanism on the operator's left. Hose unwinds from the top of the reel.

Standard for 1500, 1800, 2000 & 4000 Series reels.



RB – Right Bottom Rewind

Reels have the inlet, outlet riser, and rewind mechanism on the operator's right. Hose unwinds from the bottom of the reel.



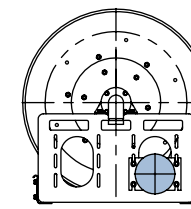
LB – Left Bottom Rewind

Reels have the inlet, outlet riser, and rewind mechanism on the operator's left. Hose unwinds from the bottom of the reel.

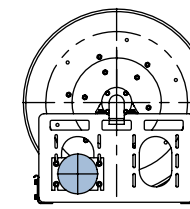
Note: Use component location initials as suffix after model number (ie; EF32-23-24 RT)

Optional Motor Locations

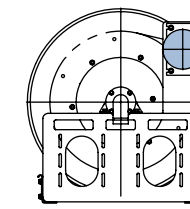
Electric rewind motors can be installed in any of the positions shown in these drawings. The Bottom Rear position is standard. The motor is installed inside the frame on Model ESF reels, which are designed for installation in restricted space.



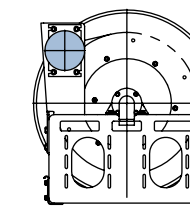
Bottom Rear (Standard)



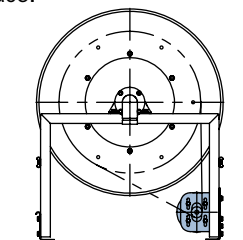
Bottom Front



Elevated 2 O'clock (REF Reels)



Elevated 10 O'clock (REF Reels)

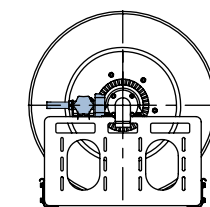


Inboard (ESF Reels)

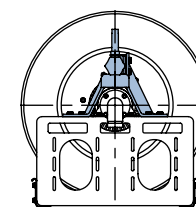
Optional Auxiliary Rewind Positions

Horizontal ring and pinion gear crank rewind mechanism is the standard configuration.

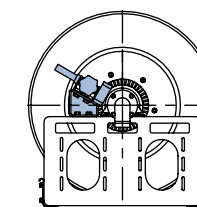
Optional positions include vertical and 30° above centerline, as shown in these drawings. Both are available at extra cost and **must be specified**.



Horizontal (Standard)



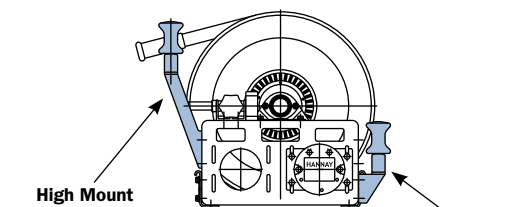
Vertical



30° Angle

Optional Roller Positions

Optional roller assembly mounting kits, up to 2 of either, can be mounted per reel. Consult factory, and indicate installation location – front or rear of reel.



High Mount

Low Mount

Series F4000 | For Booster Hose

• Compact Reels

To handle single 3/4" or 1" I.D. hose.

- Manual rewind reels include: cam-lock drag brake, spring actuated pin lock and removable direct crank rewind.
- Power rewind reels include: chain and sprocket drive powered by electric or compressed air motor. Strap brake is standard.
- Standard inlet: 90° ball bearing swivel joint, 1" female NPT threads.
- Standard outlet: 1" male NST threads (1.375" x 8 threads per inch).
- Consult factory for other sizes and/or threads.
- Standard inlet, outlet riser and hub assembly are steel (also available in stainless steel).
- Rollers and roller mounting brackets are accessory items. Specify roller position.
- Standard pressures to 1000 psi (69 bar).
- Standard fluid temperatures from -40° F to +250 °F (-40° C to +121° C).
- Consult factory for other pressures and temperatures.



Standard configuration shown with Electric Rewind (E) option



Optional External Mounting Brackets

Part No. 9906.0025.
Add 2-1/2" to the X dimensions shown in the chart.

CAUTION: F4000/F4100 Series reels **not** recommended for use with Niedner|Altra® hose. See page 15.

PARTS DRAWING – ISO 68

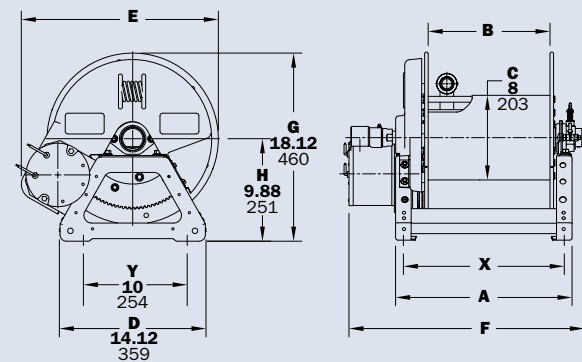
Model Number For power rewind see Note 5	Hose Capacity of Reel shown in feet/meter			Approx. Weight Crank Rewind shown in lb/kg see Note 3			Reel Dimensions*** shown in inches/millimeter						
	I.D. in. mm	3/4 19	1 25	NET	UPS/ FedEx SHIP WT.	Freight SHIP WT.	A	B	E CRANK	E POWER	F CRANK	F POWER	X
	O.D. in. mm	1-9/32 33	1-1/2 38										
F4018-17-18	50	35	36	80*	71	15	10	17.5	19	26.5	20.75	13.5	
	15	11	16	36	32	381	254	445	483	673	527	343	
F4024-17-18	100	50	46	83*	81	21	16	17.5	19	32.5	26.75	19.5	
	30	15	21	38	37	533	406	445	483	826	679	495	
F4030-17-18	150	75	57	110*	92	27	22	17.5	19	38.5	32.75	25.5	
	46	23	26	50	42	686	559	445	483	978	832	648	
F4038-17-18	200	100	70	-	125	35	30	17.5	19	46.5	40.75	33.5	
	61	30	32	-	57	889	762	445	483	1181	1035	851	

Notes:

1. Specifications subject to change.
2. Upon request, reels can be supplied with drum lengths other than shown and with disc sizes in other diameters.
3. Weights shown in chart are for crank rewind models. ADD these amounts for power rewind models. (does not apply to FedEx or UPS):

	Net lbs/kg	Ship lbs/kg
Electric	18/8.2	18/8.2
Air	15/6.8	15/6.8
4. Dimension "F" is the overall length of standard model reels. On crank rewind models, the dimension shown is with the crank in rewind position. Reels require 3-1/2" clearance to remove crank handle.
5. When ordering power rewind models, prefix model number with:
 - A = Air Rewind – supplied with control valve and 18" air hose.
 - E = Electric Rewind (1/3 HP) – 12v and 24v DC rewind reels supplied with switch and solenoid. 115v AC rewind reels are not supplied with switch, but can be ordered separately.
6. Be sure to check dimensions and weights prior to ordering.
7. Some roller options may prohibit the use of our molded chain guard.

NOTICE: A flexible connector must be used between the inlet pipe and the inlet swivel joint.
*Dimensional weight applies when shipped as a parcel package (via FedEx or UPS Ground).
*** X, Y indicate mounting holes.



Series F4100

To handle single 3/4" or 1" I.D. hose.

- Lightweight, compact reels designed for long lengths of hose in manual and power rewind.
- Gear-driven crank rewind with removable handle and adjustable brake is standard.
- Power rewind reels include: chain and sprocket drive powered by electric or compressed air motor.
- Standard inlet: 90° ball bearing swivel joint, 1" female NPT threads.
- Standard outlet: 1" male NST threads.
- Rollers and roller mounting brackets are accessory items. Specify roller position.
- Standard pressures to 1000 psi (69 bar).
- Standard fluid temperatures from -40° F to +250 °F (-40° C to +121° C).
- Consult factory for other pressures and temperatures.



Standard configuration shown with Electric Rewind (E) option and gear-driven crank rewind

CAUTION: F4000/F4100 Series reels **not** recommended for use with Niedner|Altra® hose. See page 15.

PARTS DRAWING – ISO 216

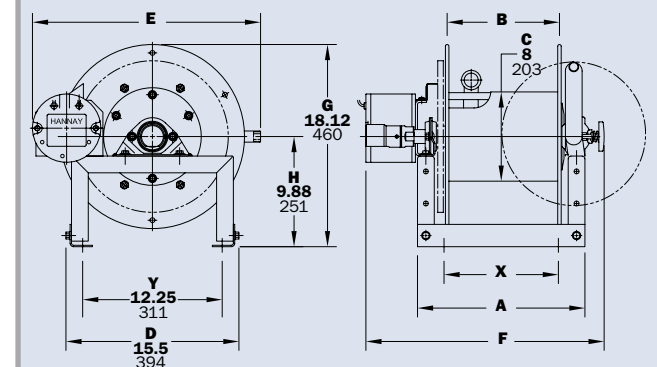
Model Number For power rewind see Note 5	Hose Capacity of Reel shown in feet/meter			Approx. Weight Crank Rewind shown in lb/kg see Note 3		Reel Dimensions*** shown in inches/millimeter					
	I.D. in. mm	3/4 19	1 25	NET	SHIP	A	B	E CRANK	E POWER	F	X
	O.D. in. mm	1-9/32 33	1-1/2 38								
F4118-17-18	50	35	62	97	15	10	18	20.5	21.5	7.5	
	15	11	28	44	381	254	457	521	546	190	
F4124-17-18	100	50	72	107	21	16	18	20.5	27.5	13.5	
	30	15	33	49	533	406	457	521	699	343	
F4130-17-18	150	75	83	118	27	22	18	20.5	33.5	19.5	
	46	23	38	54	686	559	457	521	851	495	
F4138-17-18	200	100	96	131	35	30	18	20.5	41.5	27.5	
	61	30	44	59	889	762	457	521	1054	698	

Notes:

1. Specifications subject to change.
2. Upon request, reels can be supplied with drum lengths other than shown.
3. Weights shown in chart are for crank rewind models. ADD these amounts for power rewind models:

	Net lbs/kg	Ship lbs/kg
Electric	18/8.2	18/8.2
Air	15/6.8	15/6.8
4. Dimension "F" is the overall length of standard model reels.
5. When ordering power rewind models, prefix model number with:
 - A = Air Rewind – supplied with control valve and 18" air hose.
 - E = Electric Rewind (1/3 HP) – 12v and 24v DC rewind reels supplied with switch and solenoid. 115v AC rewind reels are not supplied with switch, but can be ordered separately.
6. Be sure to check dimensions and weights prior to ordering.

NOTICE: A flexible connector must be used between the inlet pipe and the inlet swivel joint.
*** X, Y indicate mounting holes.



To handle 3/4" or 1" I.D. hose.

- Standard booster hose reel is steel, painted graphite. Aluminum or stainless steel construction is also available.
- Super Booster (SBF) polished aluminum construction reel weighs up to 30% less than standard booster reel. Prefix complete model number with "SB" when ordering. See Note 6 on page 7.
- Gear-driven crank rewind is standard. Choose chain and sprocket drive powered by electric or compressed air motor.
- Pinion brake standard.
- Standard inlet: 1" 90° ball bearing swivel joint with 1" female NPT threads.
- Standard outlet: 1" male NST threads. (1.375" x 8 threads per inch.)
- Consult factory for other sizes and/or threads.
- Standard inlet, outlet riser, and hub assembly are steel (also available in stainless steel).
- Rollers and roller mounting brackets are accessory items. Specify roller position.
- Standard pressures to 1000 psi (69 bar).
- Standard fluid temperatures from -40° F to +250 °F (-40° C to +121° C).
- Consult factory for reels to operate at other pressures and temperatures.



Shown with Electric Rewind (E), optional red finish and optional roller and spool assembly

CAUTION: When using Niedner|Altra® hose, a special riser and/or larger drum diameter is required.

See chart for capacity on page 1, or consult factory.

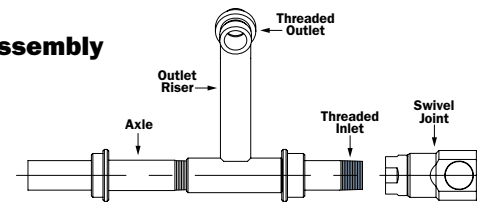
Hub Assembly Options

The hub assembly is the heart of the hose reel. It includes the outlet riser, the reel axle, and the threaded inlet to which the swivel joint is attached. The swivel joint permits the reel to rotate freely while connected to the fluid source.

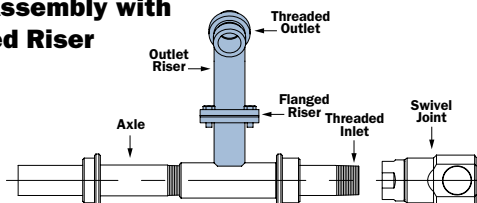
The outlet riser is engineered to conform to the contour of the drum so the hose lies smoothly against the drum without kinking. Smooth interior surfaces are flow-contoured for unrestricted flow and minimal pressure loss through the reel.

A 2-way flow hub assembly is available on certain models as an option. On this assembly, the reel axle is threaded on both ends so the swivel joint can be attached at either end to match piping. A pipe cap is supplied to seal the opposite end.

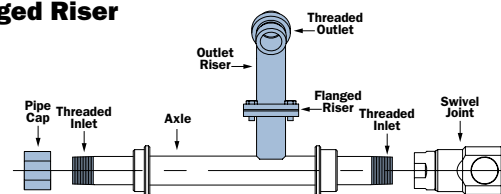
Standard Hub Assembly



Standard Hub Assembly with Optional Flanged Riser



Optional 2-Way Hub Assembly with Optional Flanged Riser



PARTS DRAWING: SERIES F – ISO 84; SERIES SBF SUPER BOOSTER® – ISO 122

Model Number For power rewind see Note 5	Hose Capacity of Reel shown in feet/meter			Approx. Weight Crank Rewind shown in lb/kg see Note 4				Reel Dimensions*** shown in inches/millimeter									
	I.D. in. mm	3/4 19	1 25	STEEL		ALUMINUM see Note 6		A	B	D	E	F CRANK	F POWER	G	H	X	Y
				NET	SHIP	NET	SHIP										
*F32-19-21-10.5	175	85	102	144	86	128	29.5	24	20.5	21.62	34.25	34.38	21.5	12.12	21.5	16.75	
	53	26	46	65	39	58	749	610	521	549	870	873	546	308	546	425	
*F24-23-24-10.5	150	125	92	134	79	121	21	15.5	20.5	23	25.75	25.88	23.5	12.12	13	16.75	
	46	38	42	61	36	55	533	394	521	584	654	657	597	308	330	425	
F30-23-24-10.5	225	200	105	147	88	130	27.5	22	20.5	23	32.25	34.25	23.5	12.12	19.5	16.75	
	68	61	48	67	40	59	699	559	521	584	819	867	597	308	495	425	
F38-23-24-10.5	300	250	120	162	100	142	35	29.5	20.5	23	39.75	41.75	23.5	12.12	27	16.75	
	91	76	54	73	45	64	889	749	521	584	1010	1060	597	308	686	425	
F28-25-26-10.5	275	175	113	155	93	135	25.5	20	25.5	24.75	30.25	32.25	27.88	15.5	17.5	21.75	
	84	53	51	70	42	62	648	508	648	629	768	819	708	394	445	552	
F34-25-26-10.5	350	250	126	168	99	141	31.5	26	25.5	24.75	36.25	38.25	27.88	15.5	23.5	21.75	
	107	76	57	76	45	64	800	660	648	629	921	972	708	394	597	552	
*F16.5-30-31-10.5	175	125	100	150	83	133	13.5	8	25.5	28.75	18.25	18.38	29.88	15.5	5.5	21.75	
	53	38	45	68	38	60	343	203	648	730	464	467	759	394	140	552	
*F20-30-31-10.5	250	150	107	157	87	137	17	11.5	25.5	28.75	21.75	21.88	29.88	15.5	9	21.75	
	76	46	49	71	39	62	432	292	648	730	552	556	759	394	229	552	
F24-30-31-10.5	350	250	113	163	91	141	21	15.5	25.5	28.75	25.75	27.75	29.88	15.5	13	21.75	
	107	76	51	74	41	64	533	394	648	730	654	705	759	394	330	552	
F28-30-31-10.5	-	300	121	171	96	146	25.5	20	25.5	28.75	30.25	32.25	29.88	15.5	17.5	21.75	
	-	91	55	78	43	66	648	508	648	730	768	819	759	394	445	552	
F34-30-31-10.5	-	350	134	184	103	153	31.5	26	25.5	28.75	36.25	38.25	29.88	15.5	23.5	21.75	
	-	107	61	83	47	69	800	660	648	730	921	972	759	394	597	552	
F20-33-34-10.5	300	200	107	157	87	137	16.5	11.5	31.5	31.75	21.12	23.25	33.62	17.75	9	27.75	
	91	61	49	71	39	62	419	292	800	806	536	591	854	451	229	705	

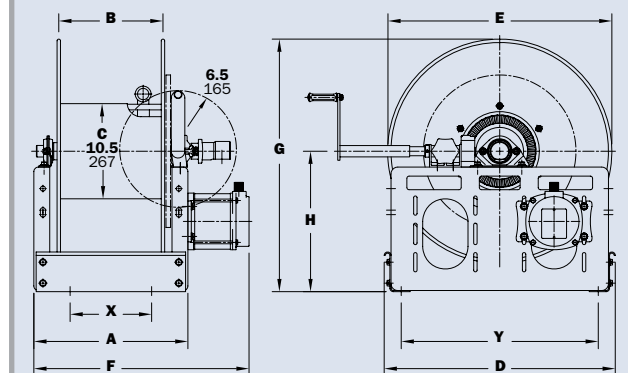
Notes:

1. Specifications subject to change.
2. A 2-way flow hub is available and must be specified. Assembly is threaded on both ends so swivel joint can be attached at either end of the reel. A pipe cap seals the opposite end. (See Ordering & Accessory Guide.)
3. Upon request, reels can be supplied with drum lengths other than shown and with disc sizes in other diameters.
4. Weights shown in chart are for crank rewind models. ADD these amounts for power rewind models:

	Net lbs/kg	Ship lbs/kg
Electric (E)	20/9.1	20/9.1
Electric (EP)	40/18.1	40/18.1
Air	20/9.1	20/9.1
5. When ordering power rewind models, prefix model number with:
 - A = Air Rewind – supplied with control valve and 18" air hose.
 - E = Electric Rewind (1/3 HP)
 - EP = Electric Rewind (1/2 HP) – 12v and 24v DC rewind reels supplied with switch and solenoid. 115v AC rewind reels are not supplied with switch, but can be ordered separately.
6. For polished aluminum reels, prefix complete model number with "SB" (for example: SBEF 32-19-21).
7. When installing FH-3 rollers, add 4-1/2" to the "D" dimension.
8. **Be sure to check dimensions and weights prior to ordering.**

NOTICE: A flexible connector must be used between the inlet pipe and the inlet swivel joint.
 *The "F" dimension for these models is shown for 1/3 HP motors. Add 2" to "F" dimension for 1/2 HP motors. The "F" dimension for all other reels is shown for 1/2 HP. Reels handling 175' or more must use 1/2 HP motor. (Use prefix EP when ordering.)

*** X, Y indicate mounting holes.



Series ESF/SBESF

For Booster
Hose

• Inboard Mounted Motor

Series ESF/SBESF

For Booster
Hose

• Inboard Mounted Motor

To handle 3/4" or 1" I.D. hose.

- Inboard motor location high profile.
- Standard booster hose reel is steel, painted graphite.
- Polished aluminum spool with stainless steel frame also available, specify "SB" in the prefix of model when ordering. See Note 6 on page 9.
- Pinion brake standard.
- Standard inlet: 1" 90° ball bearing swivel joint with 1" female NPT threads.
- Standard outlet: 1" male NST threads (1.375" x 8 threads per inch).
- Consult factory for other sizes and/or threads.
- Standard inlet, outlet riser, and hub assembly are steel (also available in stainless steel).
- Rollers and roller mounting brackets are accessory items. Specify roller position.
- Standard pressures to 1000 psi (69 bar).
- Standard fluid temperatures from -40° F to +250 °F (-40° C to +121° C).
- Consult factory for other pressures and temperatures.

CAUTION: When using Niedner|Altra® hose, a special riser and/or larger drum diameter is required.

See chart for capacity on page 15, or consult factory.



Standard configuration shown with Manual Rewind

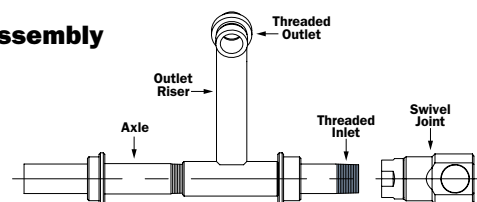
Hub Assembly Options

The hub assembly is the heart of the hose reel. It includes the outlet riser, the reel axle, and the threaded inlet to which the swivel joint is attached. The swivel joint permits the reel to rotate freely while connected to the fluid source.

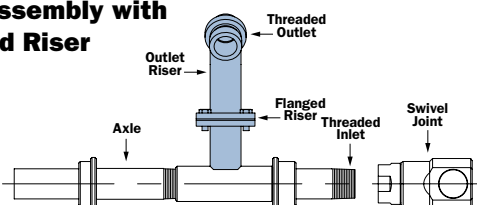
The outlet riser is engineered to conform to the contour of the drum so the hose lies smoothly against the drum without kinking. Smooth interior surfaces are flow-contoured for unrestricted flow and minimal pressure loss through the reel.

A 2-way flow hub assembly is available on certain models as an option. On this assembly, the reel axle is threaded on both ends so the swivel joint can be attached at either end to match piping. A pipe cap is supplied to seal the opposite end.

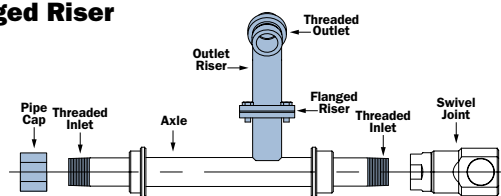
Standard Hub Assembly



Standard Hub Assembly with Optional Flanged Riser



Optional 2-Way Hub Assembly with Optional Flanged Riser



PARTS DRAWING – ISO 220

Model Number For power rewind see Note 5	Hose Capacity of Reel shown in feet/meter			Approx. Weight shown in lb/kg		Reel Dimensions*** shown in inches/millimeter									
	I.D. in. mm	3/4 19	1 25	STEEL		A	B	D	E	F	G	H	X	Y	
	O.D. in. mm	1-9/32 33	1-1/2 38	NET	SHIP										
ESF32-19-21-10.5	175	85	122	122	164	29	24	20.5	21.62	34	25.12	15.75	21.5	16.75	
	53	26	55	55	74	737	610	521	549	864	638	400	546	425	
ESF24-23-24-10.5	150	125	112	112	154	20.5	15.5	23.5	23	25.5	29.25	17.88	13	19.75	
	46	38	51	51	70	521	394	597	584	648	743	454	330	502	
*EPSF30-23-24-10.5	225	200	145	145	187	27	22	23.5	23	32	29.25	17.88	19.5	19.75	
	68	61	66	66	85	686	559	597	584	813	743	454	495	502	
*EPSF28-25-26-10.5	275	175	153	153	195	25	20	25.5	24.75	30	30.88	18.5	17.5	21.75	
	84	53	69	69	88	635	508	648	629	762	784	470	445	552	
*EPSF34-25-26-10.5	350	250	166	166	208	31	26	25.5	24.75	36	30.88	18.5	23.5	21.75	
	107	76	75	75	94	787	660	648	629	914	784	470	597	552	
ESF16.5-30-31-10.5	175	125	120	120	170	13	8	29	28.75	18	35.62	21.25	5.5	25.25	
	53	38	54	54	77	330	203	737	730	457	905	540	140	641	
ESF20-30-31-10.5	250	150	127	127	177	16.5	11.5	29	28.75	21.5	35.62	21.25	9	25.25	
	76	46	58	58	80	419	292	737	730	546	905	540	229	641	
*EPSF24-30-31-10.5	350	250	153	153	203	20.5	15.5	29	28.75	25.5	35.62	21.25	13	25.25	
	107	76	69	69	92	521	394	737	730	648	905	540	330	641	
*EPSF28-30-31-10.5	-	300	161	161	211	25	20	29	28.75	30	35.62	21.25	17.5	25.25	
	-	91	73	73	96	635	508	737	730	762	905	540	445	641	
*EPSF34-30-31-10.5	-	350	174	174	224	31	26	29	28.75	36	35.62	21.25	23.5	25.25	
	-	107	79	79	102	787	660	737	730	914	905	540	597	641	
*EPSF20-33-34-10.5	300	200	157	157	207	16.5	11.5	31.5	31.75	21.12	38.12	22.25	9	27.88	
	91	61	71	71	94	419	292	800	806	536	968	565	229	708	

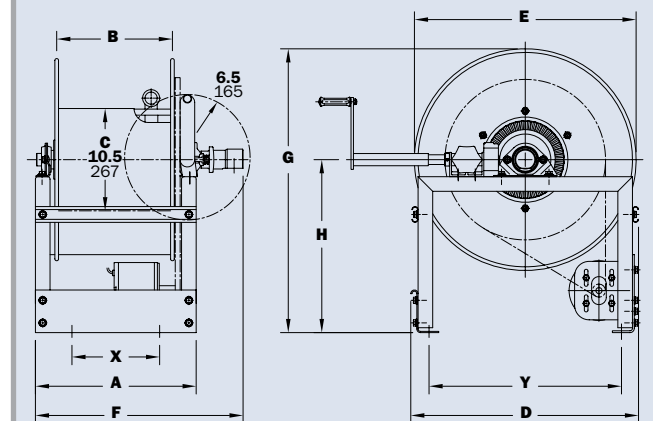
Notes:

1. Specifications subject to change.
2. A 2-way flow hub is available and must be specified. Assembly is threaded on both ends so swivel joint can be attached at either end of the reel. A pipe cap seals the opposite end. (See Ordering & Accessory Guide.)
3. Upon request, reels can be supplied with drum lengths other than shown and with disc sizes in other diameters.
4. When ordering power rewind models, prefix model number with:
E = Electric Rewind (1/3 HP)
EP = Electric Rewind (1/2 HP) – 12v and 24v DC rewind reels supplied with switch and solenoid. 115v AC rewind reels are not supplied with switch, but can be ordered separately.
5. For polished aluminum reels, prefix complete model number with "SB", for example: SBESF32-19-21.
7. Be sure to check dimensions and weights prior to ordering.

NOTICE: A flexible connector must be used between the inlet pipe and the inlet swivel joint.

* Reels handling 175' or more of 1" must use 1/2 HP motor.

*** X, Y indicate mounting holes.



Series FF/SBFF

• Large Diameter Booster Hose • Preconnected Collapsible Hose

To handle 1-1/4" or 1-1/2" I.D. booster hose or 1-1/2" or 1-3/4" I.D. collapsible hose.

- Standard booster hose reel is steel, painted graphite. Aluminum or stainless steel construction is also available.
- Super Booster (SBFF) polished aluminum construction reel weighs up to 30% less than standard booster reel. Prefix complete model number with "SB" when ordering. See Note 6 on page 11.
- Gear-driven crank rewind is standard. Choose chain and sprocket drive powered by electric or compressed air motor.
- Pinion brake standard.
- Standard inlet: 1-1/2" 90° ball bearing swivel joint with 1-1/2" female NPT threads and 2" Victaulic® groove.
- Standard outlet: 1-1/2" male NST threads. (1.990" x 9 threads per inch.)
- Consult factory for other sizes and/or threads.
- Standard inlet, outlet riser, and hub assembly are steel (also available in stainless steel).
- Rollers and roller mounting brackets are accessory items. Specify roller position.
- Standard pressures to 600 psi (41 bar).
- Standard fluid temperatures from -20° F to +212 °F (-29° C to +100° C).
- Consult factory for other pressures and temperatures.



Standard configuration shown with Electric Rewind (EP) and optional polished aluminum construction

CAUTION: When using Niedner|Altra® hose, a special riser and/or larger drum diameter is required. See chart for capacity on page 15, or consult factory.

Series FF/SBFF

• Large Diameter Booster Hose • Preconnected Collapsible Hose

PARTS DRAWING – ISO 18 PRESSED FRAME, OR ISO 41 ROLLFORM FRAME

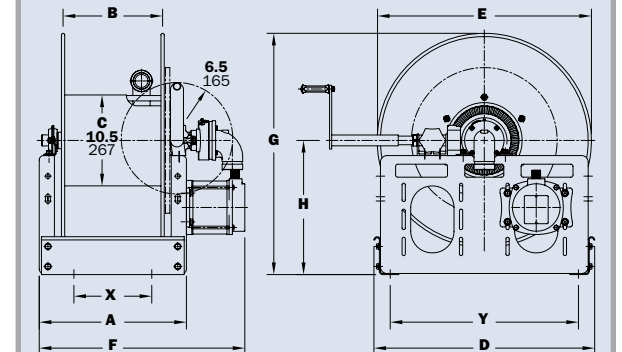
Model Number	Hose Capacity of Reel shown in feet/meter					Approx. Weight Crank Rewind shown in lb/kg see Note 4				Reel Dimensions*** shown in inches/millimeter								
	Round Hose		Collapsible Hose			STEEL		ALUMINUM see Note 6		A	B	D	E	F	G	H	X	Y
	I.D. in. mm	1-1/4 32	1-1/2 38	1-1/2 38	1-3/4 44	NET	SHIP	NET	SHIP									
FF28-23-24-10.5	100	50	150	125	111	153	86	128	25.5	20	20.5	23	32.25	23.5	12.12	17.5	16.75	
	30	15	46	38	50	69	39	58	648	508	521	584	819	579	308	445	425	
FF28-25-26-10.5	100	100	200	175	123	165	96	138	25.5	20	25.5	24.75	32.25	27.88	15.5	17.5	21.75	
	30	30	61	53	56	75	43	62	648	508	648	629	819	708	394	445	552	
FF16-30-31-10.5	75	50	100	75	110	160	86	136	13	7.5	25.5	28.75	19.75	29.88	15.5	7.75	21.75	
	23	15	30	23	50	73	39	62	330	191	648	730	502	759	394	197	552	
FF18-30-31-10.5	100	75	150	75	114	164	89	139	15	9.5	25.5	28.75	21.75	29.88	15.5	7	21.75	
	30	23	46	23	52	74	40	63	381	241	648	730	552	759	394	178	552	
FF28-30-31-10.5	250	150	300	250	131	181	99	149	25.5	20	25.5	28.75	32.25	29.88	15.5	17.5	21.75	
	76	46	91	76	59	82	45	67	648	508	648	730	819	759	394	445	552	
FF20-33-34-10.5	125	100	200	150	120	174	92	146	16.5	11.5	31.5	31.75	23.25	33.62	17.75	9	27.75	
	38	30	61	46	54	79	42	66	419	292	800	806	591	854	451	229	705	
FF22-33-34-10.5	150	150	250	200	125	179	95	149	18.5	13.5	31.5	31.75	25.25	33.62	17.75	11	27.75	
	46	46	76	61	57	81	43	67	470	343	800	806	641	854	451	279	705	

Notes:

- Specifications subject to change.
- Dimensions up to and including 30-31 disc size reflect pressed frames. All others are rollformed channel frames, except Super Booster®, which is square tubing.
- Upon request, reels can be supplied with drum lengths other than shown and with disc sizes in other diameters.
- Weights shown in chart are for crank rewind models. ADD these amounts for power rewind models.

	Net lbs/kg	Ship lbs/kg
Electric	40/18.1	40/18.1
Air	20/9.1	20/9.1
- When ordering power rewind models, prefix model number with:
 - A** = Air Rewind – supplied with control valve and 18" air hose.
 - EP** = Electric Rewind (1/2 HP) – 12v and 24v DC rewind reels supplied with switch and solenoid. 115v AC rewind reels are not supplied with switch, but can be ordered separately.
- For polished aluminum reels, prefix complete model number with "SB" (for example: SBEPFF28-23-24).
- Be sure to check dimensions and weights prior to ordering.

NOTICE: A flexible connector must be used between the inlet pipe and the inlet swivel joint.
*** X, Y indicate mounting holes.



Series F3100/FF3600

• Industrial Fire Protection

Series F3100/FF3600

• Industrial Fire Protection

To handle 3/4" through 1-1/2" I.D. booster hose or 1" through 1-3/4" I.D. collapsible hose.

- The reel can be installed on the floor or wall.
- Steel construction is standard. Aluminum or stainless steel construction is available.
- Removable direct crank rewind.
- Supplied with spring actuated pin lock.
- Standard inlet, outlet riser, and hub assembly are steel (also available in stainless steel).
- Rollers and roller mounting brackets are accessory items. Specify roller position.

Series F3100

- Standard inlet: 1" 90° ball bearing swivel joint with 1" female NPT threads.
- Standard outlet: 1" male NST threads (1.375" x 8 threads per inch).
- Standard pressures to 1000 psi (69 bar).
- Standard fluid temperatures from -40° F to +250 °F (-40° C to +121° C)

Series FF3600

- Standard inlet: 1-1/2" 90° ball bearing swivel joint with 1-1/2" female NPT threads and 2" Victaulic® groove.
- Standard outlet: 1-1/2" male NST threads (1.990" x 9 threads per inch).
- Standard pressures to 600 psi (41 bar).
- Standard fluid temperatures from -20° F to +212 °F (-29° C to +100° C).

Both Series

- Consult factory for other sizes and/or threads.
- Consult factory for other pressures and temperatures.

CAUTION: When using Niedner|Altra® hose, a special riser and/or larger drum diameter is required (consult factory). See page 15.



F3100 Series



FF3600 Series

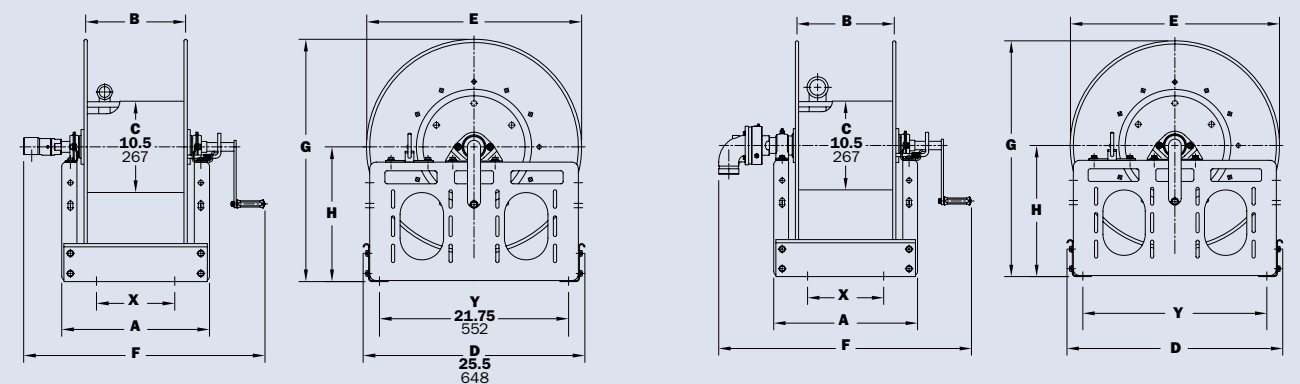
PARTS DRAWING – F3100 – ISO 113; FF3600 – ISO 111

Model Number	Hose Capacity of Reel shown in feet/meter				Approx. Weight Crank Rewind shown in lb/kg		Reel Dimensions*** shown in inches/millimeter							
	Round Hose		Collapsible Hose		NET	SHIP	A	B	E	F	G	H	X	
	I.D. in. mm	3/4 1	1-1/2	1 26										
F3116-25-26-10.5	100	75	200	85	120	13	7.5	24.75	25.5	27.88	15.5	7.75		
F3120-25-26-10.5	150	100	350	94	129	17	11.5	24.75	29.5	27.88	15.5	9		
F3124-25-26-10.5	200	125	450	103	138	21	15.5	24.75	33.5	27.88	15.5	13		
F3128-25-26-10.5	275	175	650	113	155	25.5	20	24.75	37	27.88	15.5	17.5		
F3124-30-31-10.5	350	250	-	103	153	21	15.5	28.75	33.5	29.88	15.5	13		
	107	76	-	47	70	533	394	730	851	759	394	330		

Model Number	Hose Capacity of Reel shown in feet/meter				Approx. Weight Crank Rewind shown in lb/kg		Reel Dimensions*** shown in inches/millimeter								
	Round Hose		Collapsible Hose		NET	SHIP	A	B	D	E	F	G	H	X	Y
	I.D. in. mm	1-1/2 38	1-1/2 38	1-3/4 44											
FF3620-25-26-10.5	50	150	75	104	139	17	11.5	25.5	24.75	30.75	27.88	15.5	9	21.75	
FF3624-25-26-10.5	75	150	100	113	148	21	15.5	25.5	24.75	34.75	27.88	15.5	13	21.75	
FF3628-25-26-10.5	100	200	150	123	173	25.5	20	25.5	24.75	39.25	27.88	15.5	17.5	21.75	
FF3624-30-31-10.5	100	250	150	124	174	21	15.5	25.5	28.75	34.75	30.38	15.5	13	21.75	
FF3628-30-31-10.5	150	300	250	134	184	25.5	20	25.5	28.75	39.25	30.38	15.5	17.5	21.75	
FF3634-30-31-10.5	200	400	350	147	197	31.5	26	25.5	28.75	45.25	30.38	15.5	23.5	21.75	
	61	122	107	67	89	800	660	648	730	1149	772	394	597	552	

Notes:

1. Specifications subject to change.
 2. Upon request, reels can be supplied with drum lengths other than shown and with disc sizes in other diameters.
 3. Power rewind is not available on these models. See Series F or FF.
 4. 4" clearance needed for crank handle removal.
 5. Be sure to check dimensions and weights prior to ordering.
- NOTICE:** A flexible connector must be used between the inlet pipe and the inlet swivel joint.
- ***X, Y indicate mounting holes.



F3100

FF3600

Series F7100 | Dual Hose

• Dual Agent Applications

To handle dual 3/4" through 1" I.D. hose.

- Two swivel joint inlets and two outlet risers.
- All models are available with optional aluminum or stainless steel construction. Super Booster (SB) polished aluminum construction reel weighs up to 30% less than standard booster reel. Prefix complete model number with "SB" when ordering.
- Gear-driven crank rewind is standard. Choose chain and sprocket drive powered by electric or compressed air motor.
- Pinion brake standard.
- Standard inlets: 1" 90° ball bearing swivel joint, 1" female NPT threads.
- Standard outlets: 1" male NST threads (1.375" x 8 threads per inch).
- Standard inlet, outlet riser, and hub assembly are steel (also available in stainless steel).
- Consult factory for other sizes and/or threads.
- Standard pressures to 1000 psi (69 bar).
- Standard fluid temperatures from -40° F to +250 °F (-40° C to +121° C).
- Consult factory for other pressures and temperatures.
- Rollers and roller mounting brackets are accessory items. Specify roller position.



SBEPF7100 Series shown
Standard configuration shown with optional aluminum construction (SB), Electric Rewind (EP) and roller and spool assembly high mount

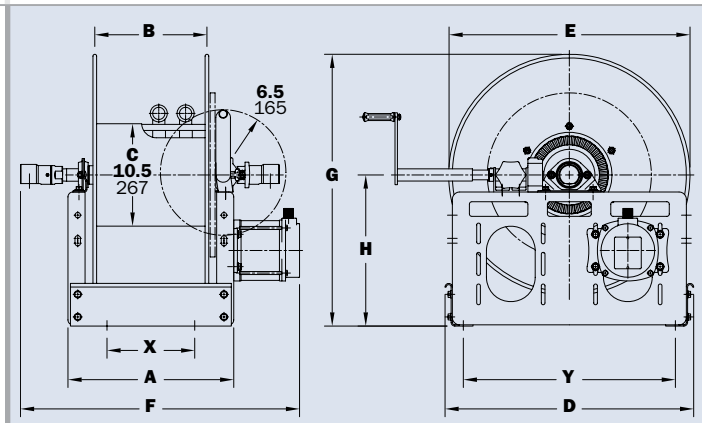
CAUTION: When using Niedner|Altra® hose, a special riser and/or larger drum diameter is required (consult factory). See page 15.

PARTS DRAWING-F7100 - ISO 72

Model Number	Hose Capacity of Reel shown in feet/meter			Approx. Weight Crank Rewind shown in lb/kg see Note 3		Reel Dimensions*** shown in inches/millimeter									
	I.D. in. mm	3/4 19	1 25	NET	SHIP	A	B	D	E	F CRANK	F POWER	G	H	X	Y
	O.D. in. mm	1-9/32 33	1-1/2 38												
F7126-23-24-10.5		2/75	2/50	109	151	23	17.5	20.5	23	32.5	34.5	23.5	12.12	15	16.75
		2/23	2/15	49	68	584	445	521	584	826	876	597	308	381	425
F7130-25-26-10.5		2/125	2/100	125	175	27.5	22	25.5	24.75	37	39	27.88	15.5	19.5	21.75
		2/38	2/31	57	79	699	559	648	629	940	991	708	394	495	552
F7130-30-31-10.5		2/200	2/150	129	179	27.5	22	25.5	28.75	37	39	29.88	15.5	19.5	21.75
		2/61	2/46	59	81	699	559	648	730	940	991	759	394	495	552
F7132-33-34-10.5		-	2/200	129	179	29	24	31.5	31.75	38.5	40.5	33.62	17.75	21.5	27.75
		-	2/61	59	81	737	610	800	806	978	1029	854	451	546	705

- Notes:**
1. Specifications subject to change.
 2. Upon request, reels can be supplied with drum lengths other than shown and with disc sizes in other diameters.
 3. Weights shown in chart are for crank rewind models. ADD these amounts for power rewind models:

	Net lbs/kg	Ship lbs/kg
Electric	40/18.1	40/18.1
Air	20/9.1	20/9.1
 4. When ordering power rewind models, prefix model number with:
A = Air Rewind – supplied with control valve and 18" air hose.
EP = Electric Rewind (1/2 HP) – 12v and 24v DC rewind reels supplied with switch and solenoid. 115v AC rewind reels are not supplied with switch, but can be ordered separately.
 5. For polished aluminum reels, prefix complete model number with "SB" (for example: SBEPF7126-23-24).
 6. Be sure to check dimensions and weights prior to ordering.



NOTICE: A flexible connector must be used between the inlet pipe and the inlet swivel joint.
*** X, Y indicate mounting holes.

Mercedes and Niedner |Altra® Capacities

Mercedes Hose

Reel Model Number	Hose Capacity of Reel shown in feet/meter				Approx. Weight shown in lb/kg				Reel Dimensions*** shown in inches/millimeter									
	I.D. in. mm	3/4 19	1 25	1-1/2 38	STEEL		ALUMINUM		A	B	C	D	E	F POWER	G	H	X	Y
	O.D. in. mm	1.062 27	1.281 33	1.812 46	NET	SHIP	NET	SHIP										
F4024-17-18		100	-	-	46	81	-	-	21	16	8	14.5	19	27	18.12	9.88	19.5	10
		30	-	-	21	37	-	-	533	406	203	368	483	686	460	251	495	254
F4030-17-18		200	-	-	57	92	-	-	27	22	8	14.5	19	33	18.12	9.88	25.5	10
		61	-	-	26	42	-	-	686	559	203	368	483	838	460	251	648	254
F4124-17-18		100	-	-	72	107	-	-	21	16	8	15.5	20.5	27.5	18.12	9.88	13.5	12.25
		30	-	-	33	49	-	-	533	406	203	394	521	699	460	251	343	311
F4130-17-18		200	-	-	83	118	-	-	27	22	8	15.5	20.5	33.5	18.12	9.88	19.5	12.25
		61	-	-	38	54	-	-	686	559	203	394	521	851	460	251	495	311
*F32-19-21		175	150	-	102	144	80	122	29.5	24	10.5	20.5	21.62	34.38	21.5	12.12	21.5	16.75
		53	46	-	46	65	36	55	749	610	267	521	549	873	546	308	546	425
*F24-23-24		200	150	-	92	134	75	117	21	15.5	10.5	20.5	23	25.88	23.5	12.12	13	16.75
		61	46	-	42	61	34	53	533	394	267	521	584	657	597	308	330	425
*F30-23-24		300	200	-	105	147	82	124	27.5	22	10.5	20.5	23	32.38	23.5	12.12	19.5	16.75
		91	61	-	48	67	37	56	699	559	267	521	584	822	597	308	495	425
*F16.5-30-31		200	150	-	100	150	80	130	13.5	8	10.5	25.5	28.75	18.38	29.88	15.5	5.5	21.75
		61	46	-	45	68	36	59	343	203	267	648	730	467	759	394	140	552
*F20-30-31		300	200	-	107	157	83	133	17	11.5	10.5	25.5	28.75	21.88	29.88	15.5	9	21.75
		91	61	-	49	71	38	60	432	292	267	648	730	556	759	394	229	552
FF32-30-31-20		-	-	100	138	188	100	150	29.5	24	20	25.5	28.75	36.25	29.88	15.5	21.5	21.75
		-	-	30	63	54	45	68	749	610	508	648	730	921	759	394	546	552
FF34-33-34-20		-	-	200	140	194	106	160	31	26	20	31.5	31.75	37.75	33.62	17.75	23.5	27.75
		-	-	61	64	88	48	73	787	660	508	800	806	959	854	451	597	705

Niedner|Altra® Hose

Reel Model Number	Hose Capacity of Reel shown in feet/meter				Approx. Weight shown in lb/kg				Reel Dimensions*** shown in inches/millimeter									
	I.D. in. mm	3/4 19	1 25	1-1/2 38	STEEL		ALUMINUM		A	B	C	D	E	F POWER	G	H	X	Y
	O.D. in. mm	1.075 27	1.325 34	1.825 46	NET	SHIP	NET	SHIP										
*F28-19-21-10.5		100	-	-	98	140	76	118	25.5	20	10.5	20.5	21.62	30.25	21.5	12.12	17.5	16.75
		30	-	-	44	64	34	54	648	508	267	521	549	768	546	308	445	425
*F26-23-24-10.5		200	-	-	94	136	71	113	23	17.5	10.5	20.5	23	27.88	23.5	12.12	15	16.75
		61	-	-	43	62	32	51	584	445	267	521	584	708	597	308	381	425
*F24-23-24-12		-	100	-	92	134	75	117	21	15.5	12	20.5	23	25.88	23.5	12.12	13	16.75
		-	30	-	42	61	34	53	533	394	305	521	584	657	597	308	330	425
F28-25-26-12		-	200	-	113	155	87	129	25.5	20	12	25.5	24.75	32.25	27.88	15.5	17.5	21.75
		-	61	-	51	70	39	59	648	508	305	648	629	819	708	394	445	552
FF32-30-31-20		-	-	100	138	188	100	150	29.5	24	20	25.5	28.75	36.25	29.88	15.5	21.5	21.75
		-	-	30	63	54	45	68	749	610	508	648	730	921	759	394	546	552
FF34-33-34-20		-	-	200	140	194	106	160	31	26	20	31.5	31.75	37.75	33.62	17.75	23.5	27.75
		-	-	61	64	88	48	73	787	660	508	800	806	959	854	451	597	705

- Notes:**
1. Specifications subject to change.
 2. These reels require a special angle riser and larger diameter drum; consult factory.
 3. For F Series – Refer to notes and diagram on page 7.
 4. For FF Series – Refer to notes and diagram on page 11.
- NOTICE:** A flexible connector must be used between the inlet pipe and the inlet swivel joint.
*The "F" dimension for these models is shown for 1/3 HP motors. Add 2" to "F" dimension for 1/2 HP motors. The "F" dimension for all other reels is shown for 1/2 HP. Reels handling 200" or more must use 1/2 HP motor. (Use prefix EP when ordering.)
*** X, Y indicate mounting holes.

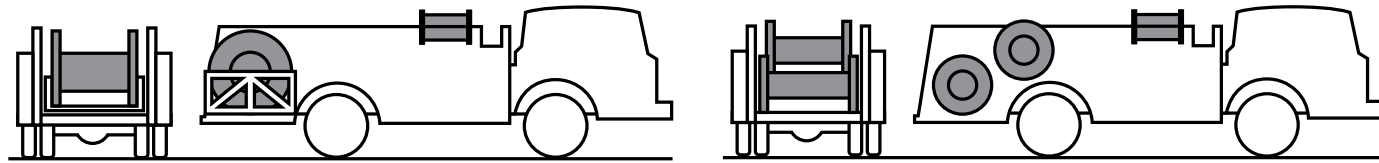
Series HDLD Reels and Spools Large Diameter

Series HDLD Reels and Spools Large Diameter

Configurations

Reels and spools to handle up to 6" I.D. collapsible hose.

Typical Installations:



Single large-capacity reel installed in the hose bed area to handle long lengths of pre-coupled hose. Hose pays out from the top of the reel so gravity assists unwinding.

Two reels installed in the hose bed. In this arrangement, the upper reel is unloaded only if necessary. Payout and rewinding of the upper reels are facilitated by the position of the lower reel. Two reels with larger-diameter discs and narrower drums can also be installed side-by-side in the rear of the hose bed to handle approximately the same amount of hose. This method allows a center walkway or paying out two lines simultaneously if required.

- Square tubing frames.
- Heavy-gauge steel discs.
- Drums are formed by reinforced tie rods with radial supports.
- Pillow block ball bearings.
- Chain and sprocket rewind with hydraulic rewind motor.
- Hydraulic caliper disc brake.

Important: Hose capacity is based on the flat hose dimensions listed below, with couplings at 100 foot intervals.

Flat Hose Dimensions

I.D.	Thick x Width	
	in	mm
2"	3/4 x 3-1/2	19 x 89
2-1/2"	3/4 x 4	19 x 102
3"	1/2 x 5	13 x 127
4"	1/2 x 6-1/2	13 x 166
5"	1/2 x 8	13 x 204
6"	1/2 x 10	13 x 254

Custom sizes are available to meet specific needs.

Consult factory for complete specifications on an LD reel to meet your requirements.

PARTS DRAWING – ISO 104

Model Number	Hose Capacity of Reel shown in feet/meter							Approx. Weight (Steel) Crank Rewind shown in lb/kg		Reel Dimensions shown in inches/millimeter					
	I.D. in. mm	2 51	2-1/2 64	3 76	4 102	5 127	6 152	NET	SHIP	A	B	D	E	G	H
HDLD234-39	350 107	350 107	400 122	300 91	200 61	-	-	365 166	465 211	31.5 800	20 508	39.5 1003	39 991	45 1143	25.5 648
HDLD242-39	600 183	500 152	500 152	400 122	300 91	-	-	381 173	481 218	39.5 1003	28 711	39.5 1003	39 991	45 1143	25.5 648
HDLD262-39	-	-	1100 335	800 244	600 183	-	-	421 191	521 236	59.5 1511	48 1219	39.5 1003	39 991	45 1143	25.5 648
HDLD274-39	-	-	-	1050 320	800 244	-	-	445 202	545 247	71.5 1816	60 1524	39.5 1003	39 991	45 1143	25.5 648
HDLD242-45	-	-	-	500 152	400 122	-	-	427 194	557 253	40 1016	28 711	45.5 1156	45 1143	51 1295	28.5 724
HDLD262-45	-	-	-	1100 335	900 274	-	-	467 212	597 271	60 1524	48 1219	45.5 1156	45 1143	51 1295	28.5 724
HDLD274-45	-	-	-	1400 427	1100 335	-	-	491 223	621 282	72 1829	60 1524	45.5 1156	45 1143	51 1295	28.5 724
HDLD242-52	-	-	-	800 244	500 152	300 91	-	581 264	731 332	40 1016	28 711	52.5 1334	52 1321	58 1473	32 813
HDLD262-52	-	-	-	1500 457	1300 396	800 244	-	621 282	771 350	60 1524	48 1219	52.5 1334	52 1321	58 1473	32 813
HDLD274-52	-	-	-	2000 610	1500 457	1200 366	-	645 283	795 361	72 1829	60 1524	52.5 1334	52 1321	58 1473	32 813
HDLD250-56	-	-	-	1300 396	1000 305	700 213	-	657 298	817 371	48 1219	36 914	56.5 1435	56 1422	62 1575	34 864
HDLD262-56	-	-	-	1800 549	1500 457	900 274	-	681 309	841 381	60 1524	48 1219	56.5 1435	56 1422	62 1575	34 864
HDLD274-56	-	-	-	2300 701	1700 518	1400 427	-	705 320	865 392	72 1829	60 1524	56.5 1435	56 1422	62 1575	34 864
HDLD350-64	-	-	-	1700 518	1300 396	900 274	-	1130 513	1330 603	50.25 1276	36 914	64.75 1645	64 1626	70 1778	38 965
HDLD374-64	-	-	-	3000 914	2000 610	1900 579	-	1200 544	1400 635	74.25 1886	60 1524	64.75 1645	64 1626	70 1778	38 965

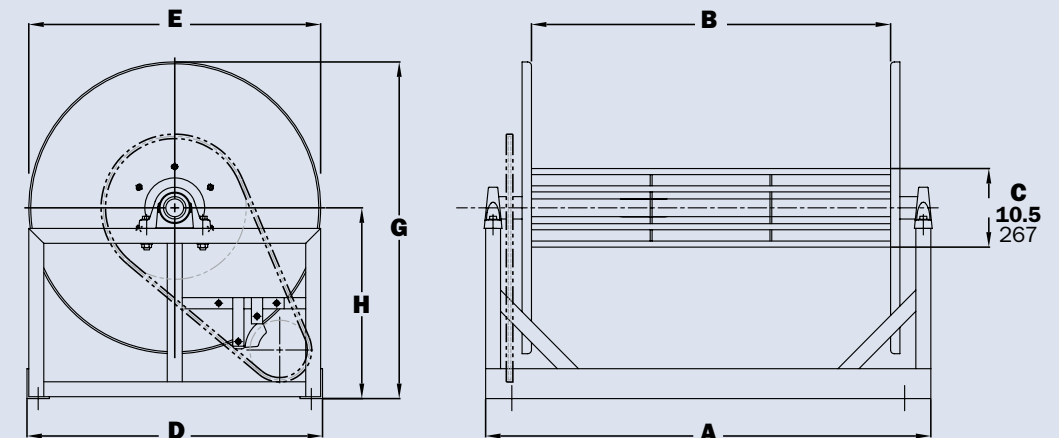
Version F Reel:

Complete reel assembly with No. 50 chain and sprocket and hydraulic rewind motor mounted inside the frame. When ordering, prefix model number with HD (for example: HDLD 350-64 version F).

Notes:

1. Specifications subject to change.
2. Upon request, reels can be supplied with drum lengths other than shown and with disc sizes in other diameters.
3. Be sure to check dimensions and weights prior to ordering.

VERSION F



Rescue Reels

Series FN700

• Utility Air or Breathing Air Hose

Hannay Reels. Durable reels you can depend on.

When it's all on the line – Hannay reels are ready when you are. Our ruggedly designed and constructed rescue reels save space on your truck and help make your payout and pickup quicker and easier.

All of our reels are built to individual vehicle specs because we know that every truck manufacturer's design is different. Rely on Hannay Reels when you need to deliver big performance in tight spaces.

The rugged **1500 Series** hose reel is ideal for utility air (or breathing air when specified). The **1600 Series** reel handles live electric cable and is invaluable when you need power at the scene of an emergency.

The reels from the **2000, 2200, and 2500 Series** are all dual hose reels unsurpassed in rescue situations that require hydraulic hose for power tools such as cutters, spreaders, or jacks.



To handle 3/16" through 1/2" I.D. hose.

- Heavy-duty spring motor.
- Narrow frame and compact mounting base.
- Non-sparking ratchet assembly.
- Declutching arbor to prevent damage from reverse winding.
- ** Standard inlet: 90° balanced pressure swivel joint, 1/2" female NPT threads. Full flow swivel joint required for breathing air (FLN and FHN).
- ** Standard outlet: 1/2" female NPT threads. Other sizes and threads can be furnished and must be specified.
- FN and FLN700 reels: pressures to 3000 psi (207 bar).
- FHN700 reels: pressures up to 6000 psi (414 bar).
- Standard fluid temperatures from -40° F to +250 °F (-40° C to +121° C).
- Consult factory for other pressures and temperatures.
- 4-way roller assembly is standard. Roller position must be specified.
- Constant tension is available – consult factory.
- Hose stop required. Order Part No. 9922.0200. Must specify hose O.D.



Standard SR configuration shown with optional stainless steel full flow swivel joint for breathing air

Summary of Standard and Optional Features for Rescue Reels

Series EF1500	Series ECR1600	Series EF2000	Series TEF						
<ul style="list-style-type: none"> • 12v motor (with switch, solenoid) • 1/2" FNPT outlet riser • 1/2" FNPT inlet swivel • Utility air service • Steel construction, graphite paint finish 	<ul style="list-style-type: none"> • 12v motor (with switch, solenoid) • 3-conductor slip ring • Steel construction, graphite paint finish 	<ul style="list-style-type: none"> • 12v motor (with switch, solenoid) • Outlet risers provided per specified tool manufacturer • 1/4" FNPT inlet swivel • Steel construction, graphite paint finish 	<ul style="list-style-type: none"> • Chain & sprocket drive with two electric gear motors • Dual spools for two independent operations • Removable chain guard • Steel construction, graphite paint finish 						
<p>Common Options</p> <ul style="list-style-type: none"> • 24v motor (with switch, solenoid) • 3/8" or 1/4" outlet riser • Breathing air service (up to 6000 psi with stainless steel internals) • Polished stainless steel/chrome finish • Hose guide rollers • Hose and hose stop installed 	<p>Common Options</p> <ul style="list-style-type: none"> • 24v motor (with switch, solenoid) • 4-conductor or higher slip ring • Polished stainless steel/chrome finish • Cable guide rollers • Cable, plug, and cable stop installed 	<p>Common Options</p> <ul style="list-style-type: none"> • 24v motor (with switch, solenoid) • Polished stainless steel/chrome finish • Hose guide rollers • Twin hose and hose stop installed 	<p>Common Options</p> <ul style="list-style-type: none"> • Hose/cable guide rollers with adjustable positions • TEF2500 outlet risers provided per specified tool manufacturer • TEF1600 3-conductor slip ring standard, 4-conductor or higher optional • TEF1500 utility air standard, breathing air service (up to 6000 psi with stainless steel internals) 						
<p>Model Prefixes</p> <ul style="list-style-type: none"> • EF Standard frame, utility air • EFL Standard frame, low pressure breathing air • EFH Standard frame, high pressure breathing air • ELF Low height, utility air • ELFL Low height, low pressure breathing air • ELFH Low height, high pressure breathing air • ESF Minimized depth, utility air • ESFL Minimized depth, low pressure breathing air • ESFH Minimized depth, high pressure breathing air 	<p>Model Prefixes</p> <ul style="list-style-type: none"> • ECR Standard frame, live cord • ELFCR Low height, live cord • ESFCR Minimized depth, live cord 	<p>Model Prefixes</p> <ul style="list-style-type: none"> • EF2000 Standard frame, twin hydraulic • ELF2000 Low height, twin hydraulic • ESF2000 Minimized depth, twin hydraulic • EF2200 Holmatro CORE hose only 	<p>Model Prefixes</p> <ul style="list-style-type: none"> • TEF2500 Dual spools, twin hydraulic • TEF1600 Dual spools, electric cable • TEF1500 Dual spools, pneumatic <p>Can be built in any combination. See pages 3, 4 & 5 or consult factory for specifications and quote.</p>						
<p>Mounting Hole Sizes</p> <table border="1"> <tr> <td>N Series Reels</td> <td>7/16" wide x 7/8" long slot running front to back</td> </tr> <tr> <td>Pressed Frame Reels and Channel Framed Reels</td> <td>7/16" wide x 7/8" long slot running left to right</td> </tr> <tr> <td>Series 1500, 1600, 2000</td> <td>13/32" round holes</td> </tr> </table>				N Series Reels	7/16" wide x 7/8" long slot running front to back	Pressed Frame Reels and Channel Framed Reels	7/16" wide x 7/8" long slot running left to right	Series 1500, 1600, 2000	13/32" round holes
N Series Reels	7/16" wide x 7/8" long slot running front to back								
Pressed Frame Reels and Channel Framed Reels	7/16" wide x 7/8" long slot running left to right								
Series 1500, 1600, 2000	13/32" round holes								

PARTS DRAWING – ISO 79

Model Number	Hose Capacity of Reel shown in feet/meter					Approx. Weight shown in lb/kg		Roller Assembly Supplied on Standard Models	Reel Dimensions shown in inches/millimeter X/Y indicate mounting holes							
	I.D. in. mm	3/16 5	1/4 6	3/8 10	1/2 13	NET	SHIP		A	B	C	E	F	G	H	X
FN716-14-16-8C	25	25	30	25	52	87*	N204	10	4	8	18.12	11.63	16.12	9.12	8	
FN716-16-17-10.5C	30	35	35	30	55	90*	N204	10	4	10.5	19	11.63	17	9.12	8	
FN716-19-20-10.5J	35	50	50	50	64	99*	N204	10	4	10.5	20.75	11.63	20	10.62	8	
FN715-23-24-15.5J	75	75	75	50	79	89*	N203	9	3	15.5	24	10.63	24	12.62	7	
FN716-23-24-15.5G	100	100	100	65	94	109	N204	10	4	15.5	24	11.63	24	12.62	8	
FN718-25-26-15.5G	-	-	-	100	98	133	N206	12	6	15.5	25.5	13.63	26	13.62	10	

Notes:

- Specifications subject to change.
- Reel models and capacities shown are for standard drag applications; for vertical lift or constant tension applications, consult factory.
- Other sizes, from standard components, available on request.
- Model Designations:
FN = Utility air applications
FLN = Low pressure breathing air applications. Add 1.12" to F dimension.
FHN = High pressure breathing air systems (6000 psi). Add 1.5" to F dimension.
 For example: **FHN** 716-14-16C is a high pressure breathing air reel.
Be sure to check dimensions and weights prior to ordering.
- NOTICE:** A flexible connector must be used between the inlet pipe and the inlet swivel joint.
 *Dimensional weight applies when shipped as a parcel package (via FedEx or UPS Ground).
 ** Stainless steel internals are required for breathing air applications.

Available Roller Positions

SR (STD) VR (OPT) TR (OPT)

Series TEF

• Power Rescue Tools • Hydraulics • Utility or Breathing Air • Electric Cable

Series TEF

• Power Rescue Tools • Hydraulics • Utility or Breathing Air • Electric Cable

Series TEF reels can be built in any combination of hydraulic, air or electric cable applications.

TEF2500 SERIES: To handle dual hydraulic 1/4" I.D. hose.

- Chain and sprocket drive powered by an electric gear motor.
- Standard inlets: Two 90° dual passage swivel joints with 1/4" female NPT threads.
- Standard outlets: Rescue tool manufacturer must be specified to determine threads and packing material required.
- Pressures to 10,500 psi (724 bar).
- Standard fluid temperatures from -40° F to +250 °F (-40° C to +121° C). Optional temperature ratings available - consult factory.
- Dual spools to operate 2 independent hydraulic rescue tools.
- Removable chain guard for added safety and easy maintenance.
- Optional 4-way rollers and mounting brackets available with adjustable positions including: forward-facing, vertically-facing and 30° angle.



TEF2500 Series
Standard configuration shown with optional rollers in Bumper Mount position

TEF1500 SERIES: To handle single 1/4", 3/8", and 1/2" I.D. hose.

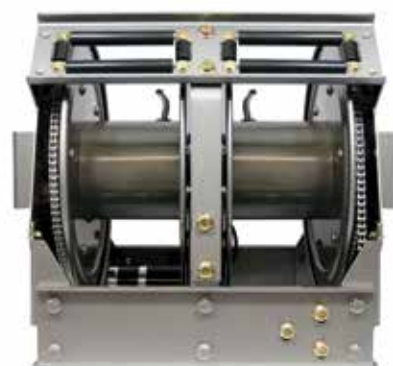
- Chain and sprocket drive powered by an electric gear motor.
- **Standard inlet: 90° ball bearing swivel joint, 1/2" female NPT threads.
- **Standard outlet: 1/2" female NPT threads. Other sizes and threads can be furnished and must be specified.
- Available for Low PSI breathing air to 3000 psi (207 bar) and High PSI breathing air to 6000 psi (414 bar). See Notes 3 & 4 below for model and dimension specifications.
- Standard fluid temperatures from -15° F to +250 °F (-26° C to +121° C). Optional temperature ratings available - consult factory
- Dual spools to operate 2 independent air hoses.
- Removable chain guard for added safety and easy maintenance.
- Optional 4-way rollers and mounting brackets available with adjustable positions including: forward-facing, vertically-facing and 30° angle.



TEF1500 Series
Standard configuration shown with optional rollers in 30 Degree Tipped position

TEF1600 SERIES: To handle live electric cable.

- Chain and sprocket drive powered by an electric gear motor.
- 3-conductor, 30-amp collector assembly with #10 gauge wiring.
- Optional 4-conductor available, must specify.
- Dual spools to operate 2 independent electric power tools.
- Removable chain guard for added safety and easy maintenance.
- Optional 4-way rollers and mounting brackets available with adjustable positions including: forward-facing, vertically-facing and 30° angle.



TEF1600 Series
Standard configuration shown with optional rollers in 30 Degree Tipped position



Optional 4-way Rollers with adjustable positions available, see available roller positions below. Consult factory for specifications.

Model Number	Hose Capacity of Reel shown in feet/meter		Approx. Weight shown in lb/kg		Reel Dimensions*** shown in inches/millimeter			
	I.D. in. mm	1/4 6	NET	SHIP	A	B	F	X
TEF2516-17-18	O.D. in. mm	17/32 13.5	95	110*	21.25	8	26.75	20.25
		2/30	43	50	540	203	679	514

Model Number	Hose Capacity of Reel shown in feet/meter HP = High pressure breathing air hose					Approx. Weight shown in lb/kg		Reel Dimensions*** shown in inches/millimeter				
	I.D. in. mm	1/4 6	3/8 10	1/2 13	NET	SHIP	A	B	F	X		
TEF1514-17-18	O.D. in. mm	5/8 16	1/2 HP 13 HP	3/4 19	21/32 HP 17 HP	7/8 22	88	109*	17.25	6	21	16.25
							49	49	438	152	533	413
TEF1516-17-18	O.D. in. mm						93	108*	21.25	8	25	20.25
							49	49	540	203	635	514
TEF1520-17-18	O.D. in. mm						103	118*	29.25	12	33	28.25
							54	54	743	305	838	718

Model Number	Cable Capacity of Reel shown in feet/meter				Approx. Weight shown in lb/kg		Reel Dimensions*** shown in inches/millimeter				
	O.D. in. mm	Ga./No. of Conductors				NET	SHIP	A	B	F	X
12/3		10/3	12/4	10/4							
TEF1614-17-18		.60	.69	.67	.75	87	102*	17.25	6	22.63	16.25
		15	18	17	19	39	46	438	152	575	413
TEF1616-17-18						92	107*	21.25	8	26.63	20.25
						48	48	540	203	676	514
TEF1618-17-18						97	112*	25.25	10	30.63	24.25
						51	51	641	254	778	616
TEF1620-17-18						102	117*	29.25	12	34.63	28.25
						46	53	743	305	880	718
TEF1622-17-18						107	122*	33.25	14	38.63	32.25
						49	55	845	356	981	819

Notes:

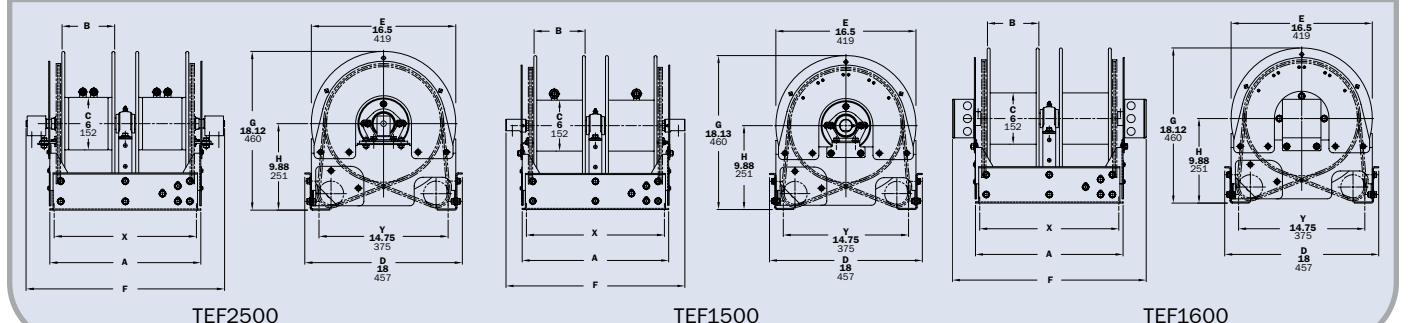
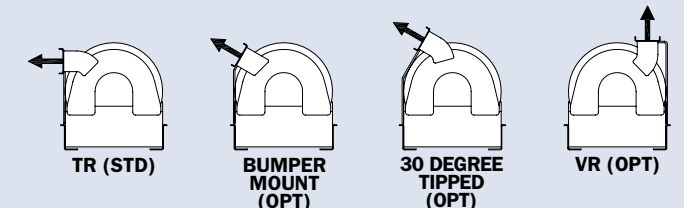
1. Specifications subject to change.
2. Be sure to check dimensions and weights prior to ordering.

NOTICE: A flexible connector must be used between the inlet pipe and the inlet swivel joint.
 * Dimensional weight applies when shipped as a parcel package (via FedEx or UPS Ground).
 ** Stainless steel internals are required for breathing air applications.
 *** X, Y indicate mounting holes. See page 18.

TEF 1500 SERIES:

- For Low PSI breathing air to 3000 psi (207 bar), prefix model number with "TEFL" and add 3/8" to F dimension for each spool.
- For High PSI breathing air to 6000 psi (414 bar), prefix model number with "TEFH" and add 1" to F dimension for each spool.

Available Roller Positions



Series F1500/FL1500/FH1500

• Utility Air or Breathing Air Hose

To handle single 1/4", 3/8", and 1/2" I.D. hose.

- Lightweight, compact reels designed for long lengths of hose in manual and power rewind.
- Manual rewind reels include: cam-lock drag brake, spring actuated pin lock and direct crank rewind.
- Power rewind reels include: chain and sprocket drive powered by electric or compressed air motor.
- ** Standard inlet: 90° ball bearing swivel joint, 1/2" female NPT threads.
- ** Standard outlet: 1/2" female NPT threads. Other sizes and threads can be furnished and must be specified.
- Roller and roller mounting brackets are accessory items. Specify roller position.
- F and FL1500 reels: pressures to 3000 psi (207 bar).
- FH1500 reels: pressures up to 6000 psi (414 bar).
- Standard fluid temperatures from -40° F to +250 °F (-40° C to +121° C). Optional temperature ratings available - consult factory.



Standard configuration shown with Electric Rewind (E) option and optional hose package



Optional External Mounting Brackets

Part No. 9906.0027.
Add 2-1/2" to the X dimensions shown in the chart.

PARTS DRAWING – ISO 90

Model Number	Hose Capacity of Reel shown in feet/meter					Approx. Weight Crank Rewind shown in lb/kg		Reel Dimensions*** shown in inches/millimeter						
	HP = High pressure breathing air hose					NET	SHIP	A	B	E CRANK	E POWER	F CRANK	F POWER	X
	I.D. in. mm	1/4 6	3/8 10	1/2 13	O.D. in. mm									
F1514-17-18	175	300	125	175	75	27	65*	11	6	17.5	19	19.25	17	9.5
	53	91	38	53	23	12	30	279	152	445	483	489	432	241
F1516-17-18	250	400	175	250	125	28	68*	13	8	17.5	19	21.25	19	11.5
	76	122	53	76	38	13	31	330	203	445	483	540	483	292
F1520-17-18	350	600	275	400	175	29	80*	17	12	17.5	19	25.25	23	15.5
	107	183	84	122	53	13	36	432	305	419	483	641	584	394

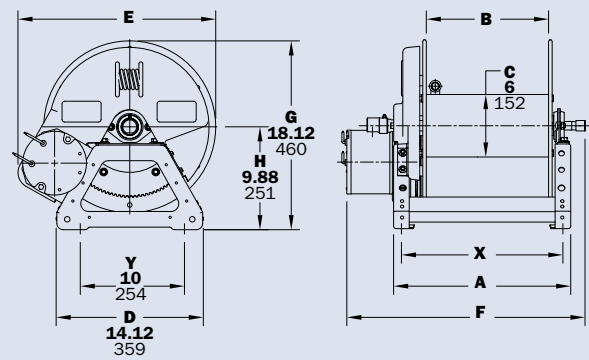
Notes:

- Specifications subject to change.
- Upon request, reels can be supplied with drum lengths other than shown and with disc sizes in other diameters.
- Weights shown in chart are for manual rewind models. Add these amounts for power rewind models (does not apply to FedEx or UPS):

	Net lbs/kg	Ship lbs/kg
Electric	18/8.2	18/8.2
Air	15/6.8	15/6.8

- When ordering power rewind models, prefix model number with:
A = Air Rewind
E = Electric Rewind
 (Air rewind reels are supplied with control valve and 18" air hose; 12v and 24v DC rewind reels are supplied with switch and solenoid.)
- Model Designations:
F1500 = Utility Air Applications
FL1500 = Low Pressure Breathing Air Applications

- FH1500 = High Pressure Breathing Air Cascade Systems
 For example: **EFL1514-17-18**=Electric Rewind, Low Pressure Breathing Air.
- Add 2-1/2" to "E" dimension and 1/2" to "G" dimension with assembly "C" roller installed in top wind (TR) position.
- Manual rewind available in RT or LB configurations only.
- Be sure to check dimensions and weights prior to ordering.**
- Some roller options may prohibit the use of our molded chain guard.
NOTICE: A flexible connector must be used between the inlet pipe and the inlet swivel joint.
 * Dimensional weight applies when shipped as a parcel package (via FedEx or UPS Ground).
 ** Stainless steel internals are required for breathing air applications.
 *** X, Y indicate mounting holes. See page 18.



Series ELF1500/ESF1500

• Utility Air or Breathing Air Hose

To handle 1/4", 3/8", and 1/2" I.D. hose.

- Chain and sprocket drive powered by an electric gear motor.
- ** Standard inlet: 90° swivel joint with 1/2" female NPT threads.
- ** Standard outlet: 1/2" female NPT thread.
- Other sizes/threads can be furnished and must be specified.
- ELF and ESF1500 reels: pressures to 3000 psi (207 bar).
- ELFL and ESFL1500 reels: pressures to 3000 psi (207 bar).
- ELFH and ESFH1500 reels: pressures to 6000 psi (414 bar).
- Standard fluid temperatures from -40° F to +250 °F (-40° C to +121° C). Optional temperature ratings available - consult factory.



◀ **ELFH1500 shown**
Choose an ELF model when **height** of reel must be minimized

ESFH1500 shown ▶
Choose an ESF model when **depth** of reel must be minimized

PARTS DRAWING – ELF1500 - ISO 227; ESF1500 - ISO 228

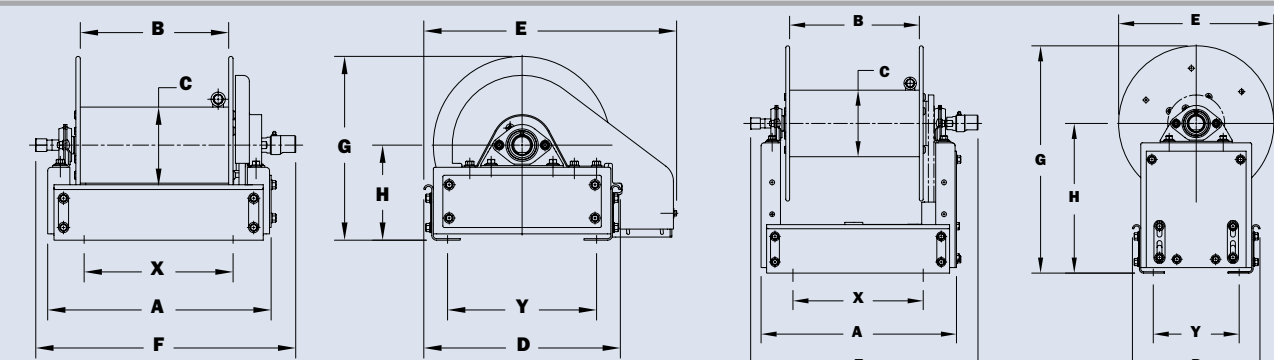
Model Number	Hose Capacity of Reel shown in feet/meter					Approx. Weight power rewind shown in lb/kg		Reel Dimensions*** shown in inches/millimeter									
	HP = High pressure breathing air hose					NET	SHIP	A	B	C	D	E	F	G	H	X	Y
	I.D. in. mm	1/4 6	3/8 10	1/2 13	O.D. in. mm												
ELF1514-14-16	100	175	75	100	50	39	65*	11.5	6	6	15.5	20	15.25	14.5	7.5	5.75	11.75
	31	53	23	30	15	18	30	292	152	152	394	508	386	368	191	146	298
ELF1516-14-16	150	250	100	150	75	41	65*	13.5	8	6	15.5	20	17.25	14.5	7.5	7.75	11.75
	46	76	31	46	23	19	30	343	203	152	394	508	437	368	191	197	298
ELF1520-14-16	225	400	175	200	100	45	80*	17.5	12	6	15.5	20	21.25	14.5	7.5	9	11.75
	69	122	53	61	31	20	36	445	305	152	394	508	538	368	191	229	298
ESF1514-14-16	100	175	75	100	50	42	58*	11.63	6	6	11.5	14	15.25	20.5	13.5	5.75	7.75
	31	53	23	30	15	19	26	295	152	152	292	356	386	521	343	146	197
ESF1516-14-16	150	250	100	150	75	44	58*	13.63	8	6	11.5	14	17.25	20.5	13.5	7.75	7.75
	46	76	31	46	23	20	26	346	203	152	292	356	437	521	343	197	197
ESF1520-14-16	225	400	175	200	100	48	65*	17.63	12	6	11.5	14	21.25	20.5	13.5	9	7.75
	69	122	53	61	31	22	30	448	305	152	292	356	538	521	343	229	197

Notes:

- Specifications subject to change.
- Upon request, reels can be supplied with drum lengths other than shown.
- 12v and 24v DC rewind reels supplied with switch and circuit breaker.

- Model Designations:
ELF or **ESF** = Utility Air Applications
ELFL or **ESFL** = Low Pressure Breathing Air Applications
ELFH or **ESFH** = High Pressure Breathing Air Cascade Systems
- Be sure to check dimensions and weights prior to ordering.**

NOTICE: A flexible connector must be used between the inlet pipe and the inlet swivel joint.
 * Dimensional weight applies when shipped as a parcel package (via FedEx or UPS Ground).
 ** Stainless steel internals are required for breathing air applications.
 *** X, Y indicate mounting holes. See page 18.



ELF1500

ESF1500

Series EF2000 | Dual Hose

• Power Rescue Tools • Hydraulics

To handle dual 1/4" I.D. hose.

- Two swivel joint inlets and two outlet risers to handle two equal lengths of hose.
- Chain and sprocket rewind powered by an electric motor.
- Optional drag brake is available. Add 3/4" to the "F" dimension shown in the chart.
- Standard inlets: 90° swivel joints, 1/4" female NPT threads.
- Standard outlets: Rescue tool manufacturer must be specified to determine threads and packing material required.
- Pressures to 10,500 psi (724 bar).
- Standard fluid temperatures from -40° F to +250 °F (-40° C to +121° C). Optional temperature ratings available - consult factory.
- Rollers and roller mounting brackets are accessory items. Specify roller position.
- Polished stainless steel discs and sprocket with chrome frame are available, consult factory.

Optional Models Available – consult factory for specifications

ELF2000 when height of reel must be minimized

ESF2000 when depth of reel must be minimized



Standard configuration shown



Optional External Mounting Brackets

Part No. 9906.0027.
Add 2-1/2" to the X dimensions shown in the chart.

PARTS DRAWING – ISO 101

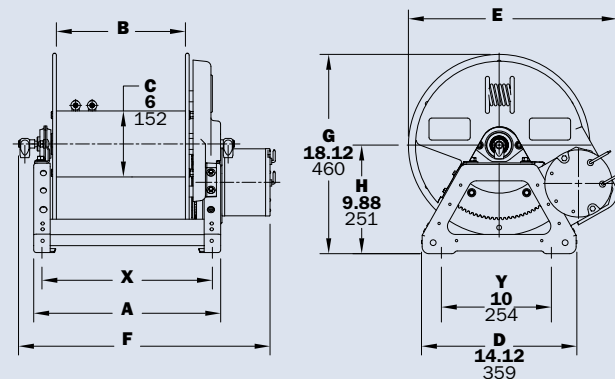
Model Number For power rewind see Note 4	Hose Capacity of Reel shown in feet/meter NOTE: 1 inch = 25.4 mm		Approx. Weight shown in lb/kg		Reel Dimensions*** shown in inches/millimeter				
	I.D. in. mm	1/4 6	NET	SHIP	A	B	E POWER	F** POWER	X
	O.D. in. mm	.53 13.5							
EF2016-17-18	2/100	50	80*	13	8	19	18.88	11.5	
	2/31	23	36	330	203	483	480	292	

Notes:

1. Specifications subject to change.
2. Upon request, reels can be supplied with drum lengths other than shown and with disc sizes in other diameters.
3. 12v and 24v DC rewind reels are supplied with switch and solenoid.
4. Add 2-1/2" to "E" dimension and 1/2" to "G" dimension with assembly "C" roller installed in top wind (TR) position.
5. Be sure to check dimensions and weights prior to ordering.
6. Some roller options may prohibit the use of our molded chain guard.

NOTICE:

- A flexible connector must be used between the inlet pipe and the inlet swivel joint.
- * Dimensional weight applies when shipped as a parcel package (via FedEx or UPS Ground).
 - ** Swivel joints required for Hurst Systems increase the "F" dimension. Add 3/8" for power rewind.
 - *** X, Y indicate mounting holes. See page 18.



Dual Hose | Series EF2200

• For CORE™ Hydraulic Dual Hose Rescue Tools

To handle hydraulic Holmatro CORE Technology™ coaxial twin hose.

- Lighter weight hose and single fitting connection when compared with traditional rescue tool hose.
- Chain and sprocket drive powered by an electric motor.
- Adjustable spring drag brake standard on all models.
- CORE Technology™ swivel joint inlet and fluid path.
- Optional factory installed 4-way roller guide available.
- Standard pressures to 10,500 psi (724 bar).
- Standard fluid temperatures from -30°F to +225°F (-34°C to +107°C).
- Divider disc separates hose from adapter block outlet.
- Optional polished stainless steel discs and sprocket with chrome frame.



Left top shown
Lead-in hose is optional



Optional External Mounting Brackets

Part No. 9906.0027.
Add 2-1/2" to the X dimensions shown in the chart.



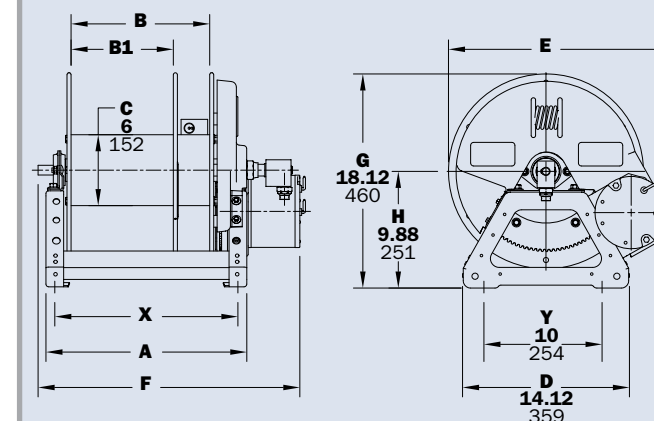
Optional roller assembly C2 shown

PARTS DRAWING – ISO 217

Model Number	Hose Capacity of Reel shown in feet/meter		Approx. Weight shown in lb/kg		Reel Dimensions*** shown in inches/millimeter					
	CORE Technology™ Coaxial Hose		NET	SHIP	A	B	B1	E	F	X
	O.D. in. mm	7/8 22								
EF2216-17-18	1/60	87	122	13	8	5	19	18.25	11.5	
	1/18	39	55	330	203	127	483	464	292	
EF2220-17-18	1/100	89	124	17	12	9	19	22.25	15.5	
	1/31	40	56	432	305	229	483	565	394	

Notes:

1. Specifications subject to change.
 2. Electric rewind models available in either 12v or 24v DC. Reels supplied with switch and solenoid.
 3. Add 2-1/2" to "E" dimension and 1/2" to "G" dimension with assembly "C2" roller installed in top wind position.
 4. Be sure to check all dimensions and weights prior to ordering. Must specify right- or left-hand configurations.
 5. Above reels cannot be shipped via UPS or FedEx Ground.
 6. Some roller options may prohibit the use of our molded chain guard.
- *** X, Y indicate mounting holes. See page 18.



Right top configuration shown

Series CR1600

• Electric Cable • On-site Power

To handle live electric cable.

- Choose removable crank rewind or chain and sprocket drive powered by an electric or compressed air motor.
- Adjustable cam-lock brake on crank rewind models.
- Optional strap brake available on power rewind models.
- 3-conductor, 45-amp collector assembly with #8 gauge wiring.
- Consult factory for additional conductors available at extra cost.
- Rollers and roller mounting brackets are accessory items. Specify roller position.



Standard configuration shown with Electric Rewind (E) option and optional cable package

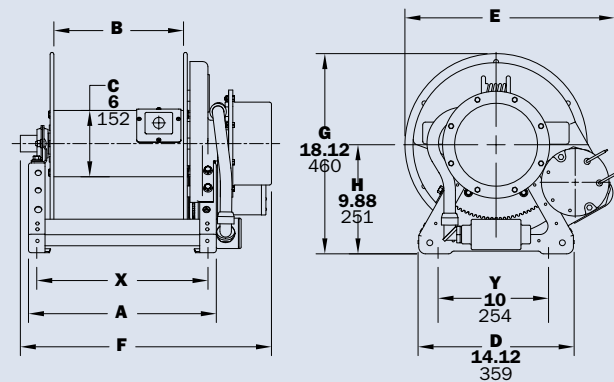
PARTS DRAWING - ISO 76

Model Number <small>For power rewind see Note 4</small>	Cable Capacity of Reel shown in feet/meter				Approx. Weight Crank Rewind shown in lb/kg		Reel Dimensions*** shown in inches/millimeter						
	Ga./No. of Conductors (4-cond see Note 7)				NET	SHIP	A	B	E CRANK	E POWER	F CRANK	F POWER	X
	O.D. in	.60	.69	.67									
CR1614-17-18	175	100	100	100	30	65*	11	6	16.5	19	23.12	17.12	9.5
	53	30	30	30	14	30	279	152	419	483	587	435	241
CR1616-17-18	200	150	150	150	32	68*	13	8	16.5	19	25.12	19.12	11.5
	61	46	46	46	15	31	330	203	419	483	638	486	292
CR1618-17-18	275	200	200	200	33	80*	15	10	16.5	19	27.12	21.12	13.5
	84	61	61	61	15	36	381	254	419	483	689	536	343
CR1620-17-18	350	250	250	225	34	80*	17	12	16.5	19	29.12	23.12	15.5
	107	76	76	69	15	36	432	305	419	483	740	587	394
CR1622-17-18	400	300	300	275	35	98*	19	14	16.5	19	31.12	27.87	17.5
	122	91	91	84	16	45	483	356	419	483	790	708	445

Notes:

- Specifications subject to change.
 - Upon request, reels can be supplied with drum lengths other than shown and with disc sizes in other diameters.
 - Weights shown in chart are for manual rewind models. Add these amounts for power rewind models (does not apply to FedEx or UPS):

	Net lbs/kg	Ship lbs/kg
Electric	18/8.2	18/8.2
Air	15/6.8	15/6.8
 - When ordering power rewind models, prefix model number with:
 - A = Air Rewind
 - E = Electric Rewind
- (Air rewind reels are supplied with control valve and 18" air hose; 12v and 24v DC rewind reels are supplied with switch and solenoid.)
- For reels with 4 conductors, 45-amp collector assemblies, add 2" to "F" dimension.
 - Add 2-1/2" to "E" dimension and 1/2" to "G" dimension with assembly "C" roller installed in top wind (TR) position.
 - Be sure to check dimensions and weights prior to ordering.
 - Some roller options may prohibit the use of our molded chain guard.
- * Dimensional weight applies when shipped as a parcel package (via FedEx or UPS Ground).
- ***X, Y indicate mounting holes. See page 18.



Cable Selections		
Power/Control Cable		
Wire Size (AWG)/ Conductors	Area (Per Conductor)	
	Circ. mils	Sq. mm
12/3 or 12/4	6500	3.3
10/3 or 10/4	10,500	5.3
Connector Options		
Straight Blade (3 or 4 blade available)	Twist Lock (3 or 4 blade available)	

Straight blade or twist lock connectors and plugs can be supplied.
Be sure to specify amperage, voltage, and NEMA designation.



Optional External Mounting Brackets

Part No. 9906.0027.
Add 2-1/2" to the X dimensions shown in the chart.

Series ELFCR1600/ESFCR1600

• Electric Cable • On-site Power

To handle live electric cable.

- Chain and sprocket drive powered by an electric gear motor.
- 3-conductor, 30-amp collector assembly with #10 gauge wiring.
- 4-conductor can be specified as an option.



ELFCR1600 extra low profile shown
Choose when height and depth of reel must be minimized



ELFCR1600 shown
Choose an ELFCR model when height of reel must be minimized



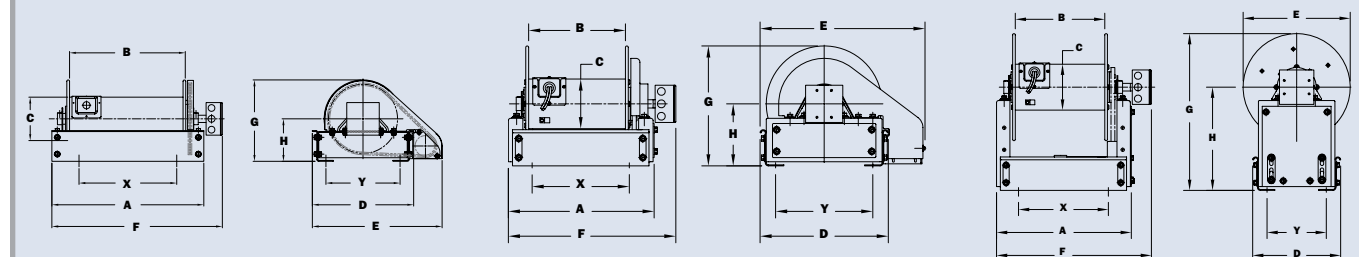
ESFCR1600 shown
Choose an ESFCR model when depth of reel must be minimized

PARTS DRAWING - ELFCR1600 - ISO 229; ESFCR1600 - ISO 230

Model Number	Cable Capacity of Reel shown in feet/meter				Approx. Weight Power Rewind shown in lb/kg		Reel Dimensions*** shown in inches/millimeter									
	Ga./No. of Conductors				NET	SHIP	A	B	C	D	E	F	G	H	X	Y
	O.D. in	.60	.69	.67												
ELFCR1624-10-11-6	150	100	100	100	47	80*	21	16	6	14	18	23.5	11.25	5.875	13.5	10.25
	46	31	31	31	21	36	533	406	152	356	457	597	286	149	343	260
ELFCR1636-10-11-6	250	200	200	200	53	95**	33	28	6	14	18	35.5	11.25	5.875	25.5	10.25
	76	61	61	61	24	43	838	711	152	356	457	902	286	149	648	260
ELFCR1616-14-16	150	100	100	100	42	65*	13.5	8	6	15.5	20	16.3	14.5	7.5	7.75	11.75
	46	31	31	31	19	30	343	203	152	394	508	413	368	191	197	298
ELFCR1618-14-16	200	125	125	125	43	65*	15.5	10	6	15.5	20	18.3	14.5	7.5	7	11.75
	61	38	38	38	20	30	394	254	152	394	508	464	368	191	178	298
ELFCR1620-14-16	250	175	175	150	44	80*	17.5	12	6	15.5	20	20.3	14.5	7.5	9	11.75
	76	53	53	46	20	36	445	305	152	394	508	514	368	191	229	298
ELFCR1622-14-16	-	200	200	175	45	80*	19.5	14	6	15.5	20	22.3	14.5	7.5	11	11.75
	-	61	61	53	20	36	495	356	152	394	508	565	368	191	279	298
ESFCR1616-14-16	150	100	100	100	44	58*	13.5	8	6	11.5	14	16.3	20.5	13.5	7.75	7.75
	46	31	31	31	20	26	346	203	152	292	356	413	521	343	197	197
ESFCR1618-14-16	200	125	125	125	46	58*	15.5	10	6	11.5	14	18.3	20.5	13.5	7	7.75
	61	38	38	38	21	26	397	254	152	292	356	464	521	343	178	197
ESFCR1620-14-16	250	175	175	150	47	65*	17.5	12	6	11.5	14	20.3	20.5	13.5	9	7.75
	76	53	53	46	21	30	448	305	152	292	356	514	521	343	229	197
ESFCR1622-14-16	-	200	200	175	48	80*	19.5	14	6	11.5	14	22.3	20.5	13.5	11	7.75
	-	61	61	53	22	36	499	356	152	292	356	565	521	343	279	197

Notes:

- Specifications subject to change.
 - Upon request, reels can be supplied with drum lengths other than shown.
 - 12v and 24v DC rewind reels supplied with switch and circuit breaker.
 - Be sure to check dimensions and weights prior to ordering.
- * Dimensional weight applies when shipped as a parcel package (via FedEx or UPS Ground).
- ** Model ELFCR1636-10-11-6 is shipped via freight only - No UPS or FedEx ground.
- *** X, Y indicate mounting holes. See page 18.



ELFCR1600 extra low profile

ELFCR1600

ESFCR1600

Series CR16-14-16

• Portable • On-site Electric Power Cable

Portable Electric Cable Reels

- Compact, lightweight.
- Rugged construction.
- Large capacity.
- 3-conductor collector ring assembly.
- 6-foot power source lead of 12/3 cable.
- 15-amp straight blade plug (15-amp or 20-amp twist lock optional).
- Adjustable cam-lock brake.
- Permanent crank rewind.



Optional 15-amp, 3-prong straight blade receptacle recessed in drum available. Specify when ordering - Add "E" to model suffix - ie: CR16-14-16E

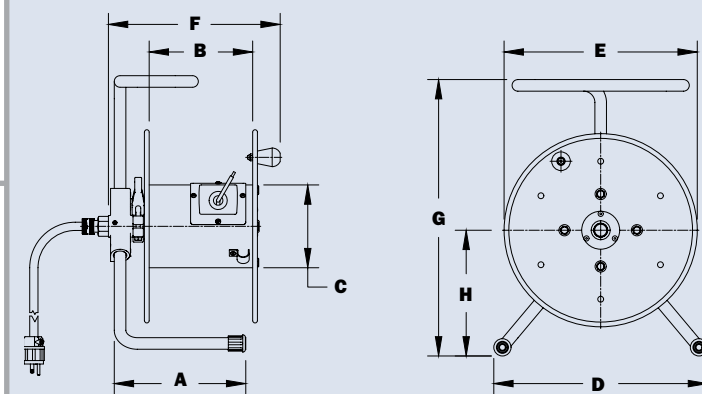


PARTS DRAWING – ISO 156

Model Number	Cable Capacity of Reel shown in feet/meter			Approx. Weight shown in lb/kg		Reel Dimensions shown in inches/millimeter								
	O.D. in O.D. mm	Ga./No. of Conductors			NET	SHIP	A	B	C	D	E	F	G	H
		16/3	14/3	12/3										
CR16-14-16	400	200	150	24	58*	9.5	7.5	6	15.5	14	12.5	20	9.13	
	122	61	46	11	26	241	190	152	394	356	318	508	232	

Notes:

1. Specifications subject to change.
 2. Be sure to check dimensions and weights prior to ordering.
- * Dimensional weight applies when shipped as a parcel package (via FedEx or UPS Ground).



Model C16-10-11/C20-14-16

• Extension Cord • Rope • Forestry Fire Hose

No live connections.

Model C16-10-11

- Small, lightweight, durable.
- Adjustable cam-lock drag brake.
- Optional storage drum extension.
- One durable rubber twist tie for cable ends. "DE" models equipped with two ties.

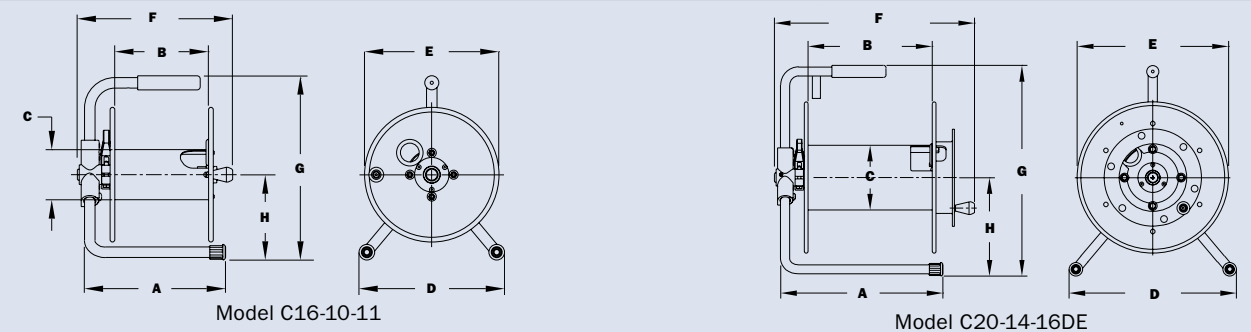
Model C20-14-16

- Strong, portable.
- Adjustable cam-lock drag brake.
- Permanent crank rewind.
- Optional pin lock available.
- Optional storage drum extension.
- One durable rubber twist tie for cable ends. "DE" models equipped with two ties.



PARTS DRAWING – MODEL C16-10-11 – ISO 88; MODEL C20-14-16 – ISO 121

Model Number	Cable Capacity of Reel shown in feet/meter			Approx. Weight shown in lb/kg		Reel Dimensions shown in inches/millimeter								
	O.D. in. mm	Ga./No. of Conductors			NET	SHIP	A	B	C	D	E	F	G	H
		14/3	12/3											
C16-10-11	125	100	10	20*	11.5	7.5	4	11.88	10.75	12.25	14.75	6.88		
	38	30	5	8	292	191	102	302	273	311	375	175		
C20-14-16	350	250	18	58*	15	12	6	15.5	14	16.75	19	8.62		
	107	76	8	26	381	305	152	394	356	425	483	219		
C16-10-11-DE	130	105	10	20*	11.5	7.5	4	11.88	10.75	14.25	14.75	6.88		
	40	32	5	8	292	191	102	302	273	362	375	175		
C20-14-16-DE	355	255	18	58*	15	12	6	15.5	14	18.75	19	8.62		
	108	78	8	26	381	305	152	394	356	476	483	219		



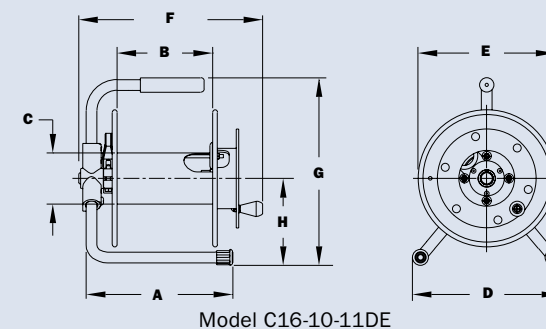
Notes:

1. Specifications subject to change.
 2. These storage reels have no live connections.
 3. Be sure to check dimensions and weights prior to ordering.
- * Dimensional weight applies when shipped as a parcel package (via FedEx or UPS Ground).



LC16-10-11 includes one durable rubber twist tie for cable ends.

Part No. 9949.0082



Rescue Reel Accessories

• Utility Hose Rollers • Circuit Breakers • Speed Control Accessories

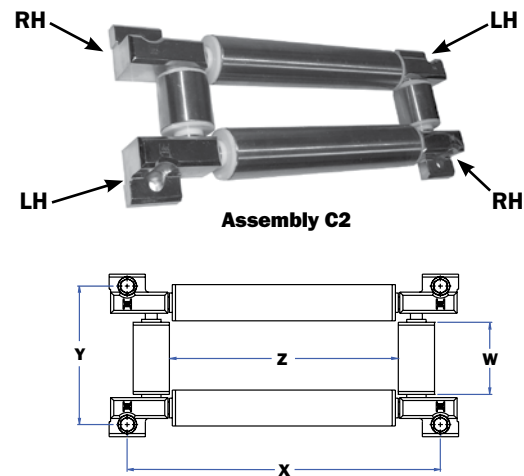
Utility Hose Rollers

Stainless steel rollers and cast alloy mounting blocks for use on the reel, on cabinet door openings, truck platforms, and similar locations where sharp edges may cut or damage hose or cable.

Specifications: 1-1/2" diameter stainless steel rollers, stainless steel rod, Delrin bearings, plated mounting blocks, and fasteners.

To Order: If the rollers are to be mounted on a Hannay reel, just give the model number of the reel. If the rollers are to be mounted separately from the reel, give the horizontal and vertical roller lengths desired (dimensions Z and W), or the horizontal and vertical distances desired between mounting holes (dimensions X and Y).

Also available factory installed on the reel. See Hannay parts list ISO-115 for further information.



RCB Kits (Reel-Mounted Relay/Circuit Breaker Modules)

RCB kits are compact, weather-resistant kits that consist of a manual reset circuit breaker and a solid state relay (which replaces the solenoid). These kits can be factory installed when ordering reels, leading to significant labor savings and eliminating the need to fabricate and mount a bracket.

RCB kits are designed to work with all rescue reel models (Series 1500, 1600, and 2000). If you already have a reel and would like to install an RCB kit yourself, call Hannay Reels or your local dealer for stand-alone pricing and part numbers.



Speed Control Accessories

Model MD-70

This is a variable speed control, allowing the user full control over the motor speed. Works on both 12v and 24v motors.

Order using Hannay Part No. 9917.0080.



Speed Control Accessories

Model MD-12HDSR

Reversing rewind switch with rocker button, variable speed control, and internal circuit protection. Good for use on all Hannay 12V DC motors. Order using Hannay Part No. 9917.0075.



NOTE: Several other speed controls, switches, and reversing switches are available (for 12v, 24v, and 115v). Consult factory for assistance.

Hannay Reels Sales Policies

Hannay Reels 3-Year Limited Warranty

Products manufactured by Hannay Reels, Inc. ("Hannay") are warranted for 3 years from date of shipment when properly installed, maintained, and operated in accordance with Hannay instructions. In no event will Hannay have a warranty obligation for normal wear and tear, or for products that have, at Hannay's determination, been subjected to accident, abuse, misapplication, improper installation or improper maintenance. Common examples of normal wear and tear would include paint finish, swivel joint seal wear, and switch or motor brush wear.

Hannay makes no warranties, express or implied, other than those included in this warranty statement, and we disclaim any implied warrant of merchantability or fitness for any particular purpose. Hannay will not be liable for any consequential, incidental, or indirect damages from any cause whatsoever.

Failure to use a flexible inlet connection on any live hose reel will void the swivel joint warranty. Failure to use a properly sized circuit breaker with any electric rewind motor will void the electric motor warranty. Failure to use a filter and lubricator on any air rewind motor will void the air motor warranty. Failure to follow all procedures outlined in the Safety Guidelines document will void the warranty.

Components not manufactured by Hannay will be subject to the original manufacturers' warranties. Examples of such components include: hose and cable, motors, speed controls, and switches, swivel joints and seals, slip ring and brush assemblies.

Equipment which proves to be defective upon our inspection will be replaced free of charge, including freight to the customer. Our responsibility ceases upon delivery to any common carrier and we do not, unless previously instructed, insure shipments beyond point of delivery to such carrier. **No material will be accepted for return without a return goods authorization (RGA).** This warranty extends to the replacement or repair of the reel or part (no labor).

Hannay reserves the right to modify or alter materials, dimensions, design, and construction when necessary to improve the performance of the reel and/or accessories, or to meet delivery requirements.

Notice on Reel Finish

Standard finish on Hannay reels is a high performance enamel paint. Standard color is metallic graphite. Other colors available, please consult factory.

Most of the major components on standard reels are e-coated prior to receiving final topcoat paint finish. This combination of e-coat and enamel topcoat will meet the finish requirements of most customer applications and environments.

In cases where requirements cannot be met with the standard finish, Hannay Reels can coat any model reel with an automotive primer, allowing application of final coating at your facility.

Alternatively, Hannay Reels can provide a quote for matching a customer-provided paint specification. For further information, please contact your Hannay Reels sales engineer and a special paint request form will be sent to you.

For environments where no paint finish is suitable, we offer both aluminum and stainless steel (304 grade) construction on most reel models.

Return Goods Policy

All Hannay reels are built to order. These orders are typically placed into production within 1 business day of receipt. Once production begins, it may not be possible to cancel the order.

To prevent returns because the wrong reels or parts were ordered, please use the Hannay Reels Spec Worksheet (either online or from our Ordering & Accessory Guide) when specifying reels. Be sure to include any size, weight, pressure and/or material compatibility limitations for the application.

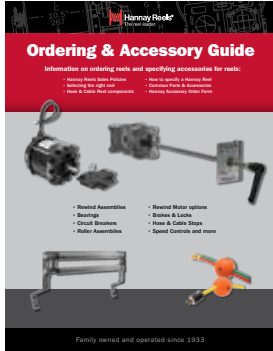
In the event that an item does need to be returned for credit, repair or replacement, prior approval must be obtained from Hannay Reels. Upon your request, we will send a Return Goods

Authorization (RGA) form. A signed copy of this form must accompany the material when returned to us, with the RGA number clearly showing on the outside of the box—a label is provided to you that you can print and attach. No product will be accepted for return or credit without an authorized RGA number.

All material must be returned prepaid, unless otherwise noted on our RGA. No return will be accepted that has been damaged due to improper return packaging, tampered with or altered from its original condition. Our restocking and handling fee is a minimum of 25% for standard catalog reels and parts. Custom reels specially built to customer specifications cannot be returned for any reason.

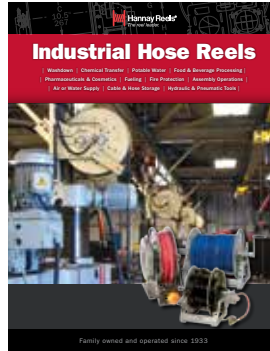
Find reels for every need.

Learn more about all of our reels, including specs, drawings, and even how to select the right reels and accessories for your industry.



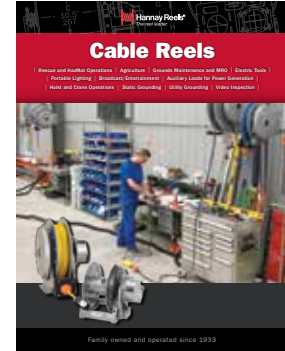
Ordering & Accessory Guide

- Selecting the right reel
- Reel components
- Available accessories
- How to spec and order reels and accessories
- Ordering options
- Hannay Reels policies



Industrial Hose Reels

- High pressure/low pressure reels
- Air/Lube/Grease reels
- Fueling
- Washdown/Power Wash
- Industrial Fire Protection
- Hydraulic/Pneumatic applications
- Hose Storage



Cable Reels

- Electric Tools
- Crane operations
- Portable Lighting
- Live and storage reels
- Video/Broadcast
- Static and Utility grounding reels

View all our reel catalogs online at hannay.com



Family owned and operated since 1933, Hannay Reels is the world leader in both OEM and aftermarket applications. Hannay offers thousands of standard hose reel and cable reel models, as well as unmatched custom capabilities. We can easily and affordably customize a reel to meet your exact specifications – built to last, delivered fast. Additional catalogs are available through your local Hannay Reels dealer or online at hannay.com.



553 State Route 143 | Westerlo, New York 12193
 Email: reels@hannay.com | hannay.com



All Hannay reels are constructed of quality heavy gauge steel (optional aluminum or stainless steel also available on most models).



AU | reeltech.com.au
 sales@reeltech.com.au
 Free call: 1800 REELIN

NZ | reeltech.co.nz
 sales@reeltech.co.nz
 Free call: 0800 REELIN

