

Series 9000

- **Fueling Applications** (Refer to Aviation Catalog H-0418-AVIA, Petroleum Catalog H-0417-FD) • **Bulk Transfer**
- **Suction/Discharge** (Consult Factory) • **High Volume Application** • **Chemical Transfer**

To handle 2" through 3" I.D. hose.

- Heavy-duty reel designed for longer lengths and larger diameters of hose through 3" I.D.
- Choose gear-driven crank rewind or chain and sprocket drive powered by an electric, hydraulic or compressed air motor.
- Crank rewind reels supplied with a pinion brake; power rewind reels with a strap brake.
- Standard inlet: 90° ball bearing swivel joint, 3" female NPT threads.
- Standard outlet: flanged riser, 3" female NPT threads.
- Standard, outlet riser, and hub assembly are aluminum with ductile inlet. Optional bronze or aluminum swivel joint and stainless steel hub assembly and riser are available.
- Rollers may be purchased as accessory items.
- Pressures to 300 psi (21 bar).
- Temperatures from -50°F to +180°F (-45°C to +82° C).
- Consult factory for other pressures and temperatures.



Electric rewind
Standard
configuration
shown



Chain Clutch-Reduction Units

For use on reels with disc diameter 39" or larger and/or when increased torque and slower rewind speeds are required. Factory installed when specified or available as an accessory item.

PARTS DRAWING – ISO 57

Model Number For power rewind see Note 4	Hose Capacity of Reel feet m				Approx. Weight Crank Rewind lb. kg see Note 3		Reel Dimensions*** in. mm									
	I.D. in. mm	2 51	2-1/2 64	3 76	NET	SHIP	A	B	D	E	F CRANK	F POWER	G	H	X	Y
	O.D. in. mm	2-9/16 65	3-3/16 81	3-3/4 95												
9332-33-34		70 21	30 9	25 8	147 67	217 98	23.75 603	17.5 445	31.5 800	31.75 80	33.75 857	33.25 845	33.88 861	18 457	16.25 413	27.75 705
9338-33-34		100 30	45 14	35 11	187 85	257 117	30.25 768	24 610	31.5 800	31.75 807	40.25 1022	39.75 1010	33.88 861	18 457	22.75 578	27.75 705
9346-33-34		140 43	60 18	50 15	237 108	372 169	38.25 972	32 813	31.5 800	31.75 807	48.25 1226	47.75 1213	33.88 861	18 457	30.75 781	27.75 705
9338-39-40		185 56	90 27	80 24	239 108	480 218	30.25 768	24 610	40 1016	39 991	40.25 1022	39.75 1010	40.38 1026	20.88 530	22.75 578	37 940
9334-45-46		200 61	130 40	115 35	361 164	525 239	26.25 667	20 508	46 1168	45 1143	36.25 921	35.75 908	46.38 1178	23.88 607	18.75 476	43 1092

Notes:

- Specifications subject to change.
- Upon request, reels can be supplied with drum lengths other than shown and with disc sizes in other diameters.
- Weights shown in chart are for crank rewind models. ADD these amounts for power rewind models.

	Net lbs/kg	Ship lbs/kg
Electric	40/18.1	40/18.1
Hydraulic	20/9.1	20/9.1
Air	20/9.1	20/9.1

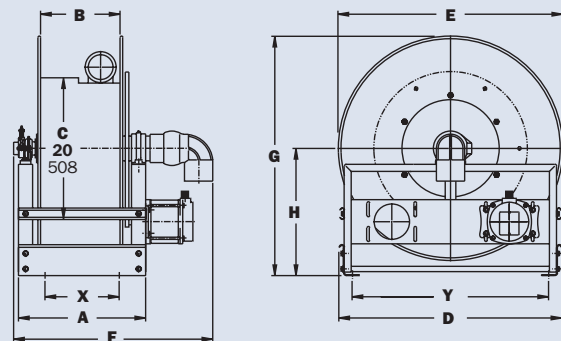
- When ordering power rewind models, prefix model number with:
A = Air Rewind
EP = Electric Rewind (1/2 HP)
HD = Hydraulic Rewind
(Air rewind reels are supplied with control valve and 18" air hose; 12v and 24v DC rewind reels are supplied with switch and solenoid; 115v AC rewind reels are not supplied with switch but can be ordered separately; hydraulic rewind reels are not supplied with control valve.)

- Finish:** Refer to page 3.

- Be sure to check dimensions and weights prior to ordering.**

NOTICE: A flexible connector must be used between the inlet pipe and the inlet swivel joint.

*** X, Y indicate mounting holes. See page 5.



Power rewind shown