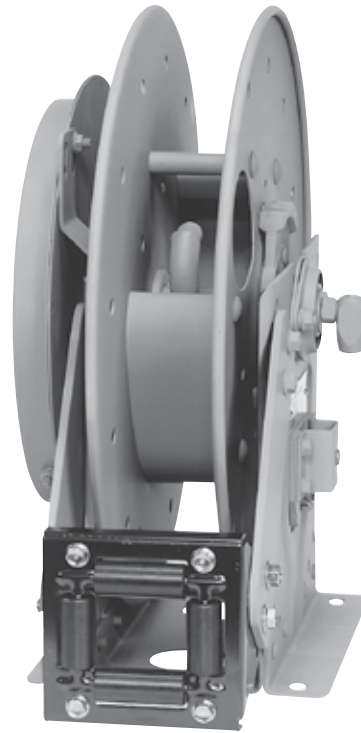


High Pressure | Series N500

• Chassis Grease • Hydraulics • Air/Water

To handle single 1/4" or 3/8" I.D. hose.

- Compact frame and narrow base.
- Non-sparking ratchet assembly.
- Declutching arbor to prevent damage from reverse winding.
- Standard inlet: 90° swivel joint, 1/4" female NPT threads.
3/8" female NPT threads are optional and **must be specified**.
- Standard outlet: 1/4" female NPT threads.
3/8" female NPT threads are optional and **must be specified**.
- Other threads can be furnished and **must be specified**.
- Standard 1/4" pressure & temp: 10,000 psi (690 bar),
-40°F to +250°F (-40°C to +121°C).
- Standard 3/8" pressure & temp: 3000 psi (207 bar),
-40°F to +250°F (-40°C to +121°C).
- Optional 3/8" pressure: 8000 psi (552 bar) – must specify.
- 4-way roller assembly.
- Constant tension is available – consult factory.



Standard configuration shown

PARTS DRAWING – ISO 92

| Model Number | Hose Capacity of Reel feet m | | | Approx. Weight lb. kg | | | Standard Roller Assy. | Reel Dimensions*** in. mm | | | |
|------------------|---------------------------------|-----------|-----------|--------------------------|------------------------------|------------------------|-----------------------|------------------------------|-------|-------|---|
| | I.D. in. mm | 1/4 6 | 3/8 10 | NET | UPS/ FedEx SHIP Wt. | Freight SHIP Wt. | | C | E | G | H |
| | O.D. in. mm | 5/8 16 | 3/4 19 | | | | | | | | |
| N515-14-16-8L | 25 | 25 | 48 | 64* | 83 | N203 | 8 | 17.62 | 16.25 | 9.12 | |
| | 8 | 8 | 22 | 29 | 38 | | 203 | 448 | 413 | 232 | |
| N515-16-17-10.5C | 35 | 35 | 51 | 67* | 86 | N203 | 10.5 | 18.5 | 17 | 9.12 | |
| | 11 | 11 | 23 | 30 | 39 | | 267 | 470 | 432 | 232 | |
| N515-19-20-10.5J | 50 | 50 | 63 | 81* | 98 | N203 | 10.5 | 20.75 | 20 | 10.62 | |
| | 15 | 15 | 29 | 37 | 44 | | 267 | 527 | 508 | 270 | |
| N515-23-24-15.5J | 75 | 65 | 75 | 92* | 110 | N203 | 15.5 | 23.75 | 24 | 12.62 | |
| | 23 | 20 | 34 | 42 | 50 | | 394 | 603 | 610 | 321 | |

Notes:

A hose stop is necessary to keep spring from unwinding.

1. Specifications subject to change.
2. Reel models and capacities shown are for standard drag applications; for vertical lift applications, consult factory.
3. Other sizes, from standard components, available on request.

4. **Finish:** Refer to page 3.

5. **Be sure to check dimensions and weights prior to ordering.**

NOTICE: A flexible connector must be used between the inlet pipe and the inlet swivel joint.

* Dimensional weight may apply when shipped as a parcel package (via FedEx or UPS Ground).

*** X, Y indicate mounting holes. See page 5.

Available Roller Positions



SR (STD)



VR (OPT)



TR (OPT)



TR (Wallmount)

